

HSPA13 Polyclonal Antibody

Catalog number: 12667-2-AP

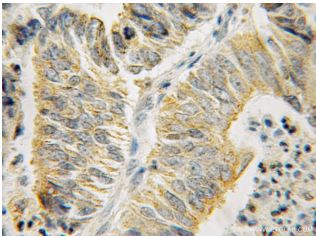
Size: 24 µg/150 µl

Source: Rabbit

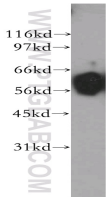
Isotype: IgG

Synonyms:

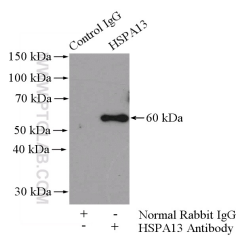
HSPA13; Heat shock 70 kDa protein 13, HSPA13, STCH



Immunohistochemical of paraffin-embedded human endometrial cancer using 12667-2-AP(HSPA13 antibody) at dilution of 1:50 (under 10x lens)



human brain tissue were subjected to SDS PAGE followed by western blot with 12667-2-AP(HSPA13 antibody) at dilution of 1:500



IP Result of anti-HSPA13 (IP:12667-2-AP, 4µg; Detection:12667-2-AP 1:300) with HeLa cells lysate 1200ug.

Background

HSPA13 (Heat shock 70 kDa protein 13), also known as STCH (the stress 70 protein chaperone), is a member of the Hsp70 family of ATPase “stress” or “heat shock” proteins. Human STCH encodes a 60 kDa protein that is highly enriched in the ER. Recently it has been reported that overexpression of the HSPA13 gene reduces prion disease incubation time in mice.

Applications

Tested applications:	ELISA, WB, IHC, IP
Cited applications:	WB
Species specificity:	Human, Mouse, Rat; other species not tested.
Cited species:	Human
Calculated HSPA13 MW:	471aa, 52 kDa
Observed HSPA13 MW:	60kd
Positive WB detected in	Human brain tissue, HeLa cells
Positive IP detected in	HeLa cells
Positive IHC detected in	Human endometrial cancer tissue
Recommended dilution:	WB: 1:500-1:5000 IP: 1:200-1:1000 IHC: 1:20-1:200

Application key: WB = Western blotting, IHC = Immunohistochemistry, IF = Immunofluorescence, IP = Immunoprecipitation

Immunogen information

Immunogen:	Ag3349
GenBank accession number:	BC036370
Gene ID (NCBI):	6782
Full name:	Heat shock protein 70kDa family, member 13

Product information

Purification method:	Antigen affinity purification
Storage:	PBS with 0.1% sodium azide and 50% glycerol pH 7.3. Store at -20°C.