

RFC4 Polyclonal Antibody

Catalog number: 10806-1-AP

Size: 30 µg/150 µl

Source: Rabbit

Isotype: IgG

Synonyms:

RFC4; A1, A1 37 kDa subunit,

Activator 1 37 kDa subunit,

Activator 1 subunit 4,

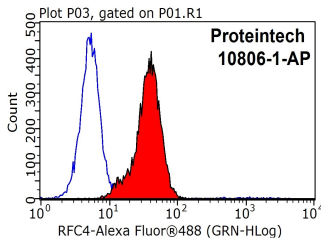
Replication factor C subunit 4,

RF C 37 kDa subunit, RFC37,

RFC4

Applications

Tested applications:	ELISA, WB, IF, FC
Species specificity:	Human; other species not tested.
Calculated RFC4 MW:	37 kDa
Observed RFC4 MW:	40-45 kDa
Positive WB detected in	MCF7 cells, LNCaP cells, MCF-7 cells, Raji cells
Positive IF detected in	HepG2 cells
Positive FC detected in	HepG2 cells
Recommended dilution:	WB: 1:200-1:2000
	IF: 1:10-1:100
	FC: N/A



Application key: WB = Western blotting, IHC = Immunohistochemistry, IF = Immunofluorescence, IP = Immunoprecipitation

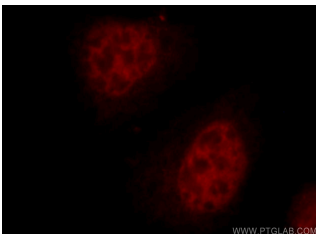
Immunogen information

Immunogen:	Ag1234
GenBank accession number:	BC017452
Gene ID (NCBI):	5984
Full name:	Replication factor C (activator 1) 4, 37kDa

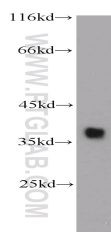
Product information

Purification method:	Antigen affinity purification
Storage:	PBS with 0.1% sodium azide and 50% glycerol pH 7.3. Store at -20°C.

1X10⁶ HepG2 cells were stained with 0.2µg RFC4 antibody (10806-1-AP, red) and control antibody (blue). Fixed with 90% MeOH blocked with 3% BSA (30 min). Alexa Fluor 488-conjugated AffiniPure Goat Anti-Rabbit IgG(H+L) with dilution 1:1000.



Immunofluorescent analysis of HepG2 cells, using RFC4 antibody 10806-1-AP at 1:25 dilution and Rhodamine-labeled goat anti-rabbit IgG (red).



MCF7 cells were subjected to SDS PAGE followed by western blot with 10806-1-AP(RFC4 antibody) at dilution of 1:500