

## STOML2 Polyclonal Antibody

Catalog number: 10348-1-AP

Size: 32 µg/150 µl

Source: Rabbit

Isotype: IgG

Synonyms:

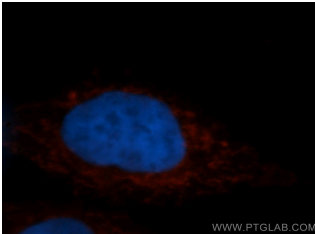
STOML2; EPB72 like protein 2,

HSPC108, SLP 2, SLP2,

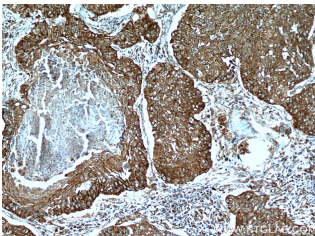
stomatin (EPB72) like 2,

Stomatin like protein 2,

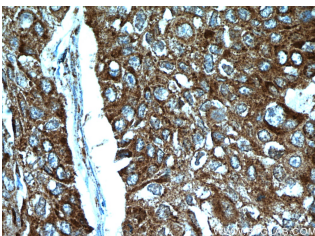
STOML2



Immunofluorescent analysis of MCF-7 cells, using STOML2 antibody 10348-1-AP at 1:50 dilution and Rhodamine-labeled goat anti-rabbit IgG (red). Blue pseudocolor = DAPI (fluorescent DNA dye).



Immunohistochemical of paraffin-embedded human lung cancer using 10348-1-AP (STOML2 antibody) at dilution of 1:100 (under 10x lens)



Immunohistochemical of paraffin-embedded human lung cancer using 10348-1-AP (STOML2 antibody) at dilution of 1:100 (under 40x lens)

### Background

STOML2 (Stomatin-like protein 2; also known as SLP-2) is a widely expressed mitochondrial member of the highly conserved family of stomatin proteins. STOML2 is localized mostly in mitochondrial inner membrane, minor in plasma membrane. Human STOML2 interacts with prohibitins and regulates mitochondrial biogenesis and function (21746876). In addition, plenty of studies revealed that STOML2 was overexpressed in many human cancer tissues, and its expression may be a new valuable prognostic biomarker (19839737, 21960069). Recently STOML2 has been identified as a serological biomarker for early colorectal cancer (CRC) diagnosis (21209152).

### Applications

Tested applications:	ELISA, IF, IP, WB, IHC
Cited applications:	IHC, WB
Species specificity:	Human, Mouse, Rat; other species not tested.
Cited species:	Human, mouse
Calculated STOML2 MW:	356aa, 39 kDa
Observed STOML2 MW:	39 kDa
Positive WB detected in	C6 cells, mouse brain tissue
Positive IP detected in	Mouse brain tissue
Positive IHC detected in	Human lung cancer tissue, human breast cancer tissue, human endometrial cancer tissue
Positive IF detected in	MCF-7 cells
Recommended dilution:	WB: 1:500-1:5000 IP: 1:500-1:5000 IHC: 1:20-1:200 IF: 1:20-1:200

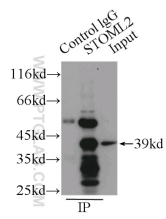
Application key: WB = Western blotting, IHC = Immunohistochemistry, IF = Immunofluorescence, IP = Immunoprecipitation

### Immunogen information

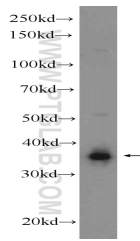
Immunogen:	Ag0363
GenBank accession number:	BC002442
Gene ID (NCBI):	30968
Full name:	Stomatin (EPB72)-like 2

### Product information

Purification method:	Antigen affinity purification
Storage:	PBS with 0.1% sodium azide and 50% glycerol pH 7.3. Store at -20°C.



**IP Result of anti-STOML2**  
**(IP:10348-1-AP, 3ug;**  
**Detection:10348-1-AP 1:1000)**  
**with mouse brain tissue lysate**  
**1000ug.**



**C6 cells were subjected to**  
**SDS PAGE followed by**  
**western blot with 10348-1-**  
**AP( STOML2 Antibody) at**  
**dilution of 1:1000**