

## INTS5 Polyclonal Antibody

Catalog number: 14069-1-AP

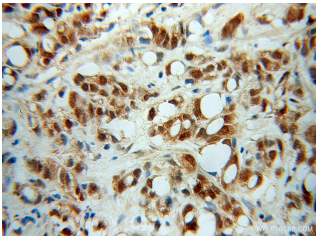
Size: 43 µg/150 µl

Source: Rabbit

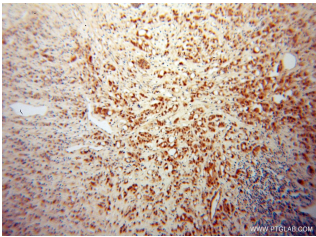
Isotype: IgG

Synonyms:

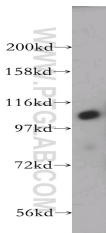
INTS5; INT5, integrator complex subunit 5, INTS5, KIAA1698



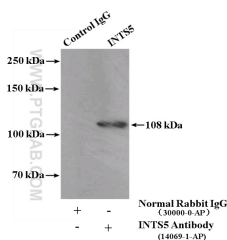
Immunohistochemical of paraffin-embedded human prostate cancer using 14069-1-AP (INTS5 antibody) at dilution of 1:100 (under 40x lens)



Immunohistochemical of paraffin-embedded human prostate cancer using 14069-1-AP (INTS5 antibody) at dilution of 1:100 (under 10x lens)



human brain tissue were subjected to SDS PAGE followed by western blot with 14069-1-AP (INTS5 antibody) at dilution of 1:500



IP Result of anti-INTS5

(IP:14069-1-AP, 4µg;

### Applications

<b>Tested applications:</b>	ELISA, WB, IHC, IP
<b>Species specificity:</b>	Human, Mouse, Rat; other species not tested.
<b>Calculated INTS5 MW:</b>	108 kDa
<b>Observed INTS5 MW:</b>	108 kDa
<b>Positive WB detected in</b>	Human brain tissue, HeLa cells
<b>Positive IP detected in</b>	HeLa cells
<b>Positive IHC detected in</b>	Human prostate cancer tissue
<b>Recommended dilution:</b>	WB: 1:500-1:5000
	IP: 1:500-1:5000
	IHC: 1:20-1:200

Application key: WB = Western blotting, IHC = Immunohistochemistry, IF = Immunofluorescence, IP = Immunoprecipitation

### Immunogen information

<b>Immunogen:</b>	Ag5129
<b>GenBank accession number:</b>	BC060841
<b>Gene ID (NCBI):</b>	80789
<b>Full name:</b>	Integrator complex subunit 5

### Product information

<b>Purification method:</b>	Antigen affinity purification
<b>Storage:</b>	PBS with 0.02% sodium azide and 50% glycerol pH 7.3. Store at -20°C.

Detection:14069-1-AP 1:1000)  
with HeLa cells lysate 2000ug.