

Occludin Polyclonal Antibody

Catalog number: 13409-1-AP

Size: 40 µg/150 µl

Source: Rabbit

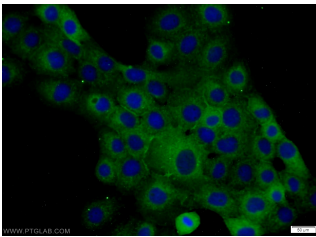
Isotype: IgG

Synonyms:

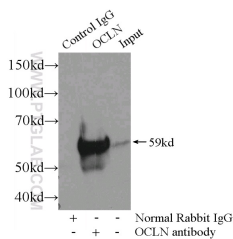
OCLN; occludin, OCLN



human liver tissue were subjected to SDS PAGE followed by western blot with 13409-1-AP(OCLN antibody) at dilution of 1:600



Immunofluorescent analysis of A431 cells using 13409-1-AP(Occludin Antibody) at dilution of 1:25 and Alexa Fluor 488-conjugated AffiniPure Goat Anti-Rabbit IgG(H+L)



IP Result of anti-Occludin (IP:13409-1-AP, 3µg; Detection:13409-1-AP 1:500) with mouse liver tissue lysate 6400µg.

Background

Occludin is an integral membrane protein located at the tight junction. It is a tetraspanin protein with four transmembrane domains, intracellular N and C termini and two extracellular loops. Occludin plays a role in the formation and regulation of the tight junction paracellular permeability barrier. Occludin can exist in different isoforms, owing to modifications at the posttranscriptional and posttranslational levels (PMID: 22083955).

Applications

Tested applications:	ELISA, WB, IP, IF
Cited applications:	WB
Species specificity:	Human, Mouse, Rat; other species not tested.
Cited species:	Human
Calculated Occludin MW:	522aa, 59 kDa
Observed Occludin MW:	59 kDa
Positive WB detected in	Human liver tissue, human kidney tissue, mouse kidney tissue, mouse liver tissue, mouse skin tissue
Positive IP detected in	Mouse liver tissue
Positive IF detected in	A431 cells
Recommended dilution:	WB: 1:500-1:5000 IP: 1:200-1:2000 IF: 1:10-1:100

Application key: WB = Western blotting, IHC = Immunohistochemistry, IF = Immunofluorescence, IP = Immunoprecipitation

Immunogen information

Immunogen:	Ag4057
GenBank accession number:	BC029886
Gene ID (NCBI):	4950
Full name:	Occludin

Product information

Purification method:	Antigen affinity purification
Storage:	PBS with 0.02% sodium azide and 50% glycerol pH 7.3. Store at -20°C.