

BACE1 Polyclonal Antibody

Catalog number: 12807-1-AP

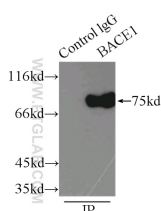
Size: 28 µg/150 µl

Source: Rabbit

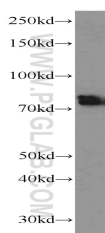
Isotype: IgG

Synonyms:

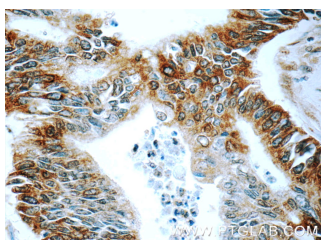
BACE1; Asp 2, ASP2, Aspartyl protease 2, BACE, BACE1, Beta secretase 1, FLJ90568, HSPC104, KIAA1149, Memapsin 2



IP Result of anti-BACE1 (IP:12807-1-AP, 3µg; Detection:12807-1-AP 1:500) with mouse brain tissue lysate 7500µg.



mouse brain tissue were subjected to SDS PAGE followed by western blot with 12807-1-AP(BACE1 antibody) at dilution of 1:500



Immunohistochemistry of paraffin-embedded human pancreas cancer tissue slide using 12807-1-AP(BACE1 Antibody) at dilution of 1:50 (under 40x lens)

Background

Beta-secretase, encoded by BACE1(beta-site amyloid beta A4 precursor protein-cleaving enzyme1) gene, participate in the two step proteolytic processing of the APP. Cleaves at the N-terminus of the A-beta peptide sequence, between residues 671 and 672 of APP, leads to the generation and extracellular release of beta-cleaved soluble APP, and a corresponding cell-associated C-terminal fragment which is later released by gamma-secretase. It has a high expression in the brain and pancreas. This protein has 6 isoforms produced by alternative splicing. BACE1 can exist as a homodimer with the MW of 120 kDa and the glycosylated immature with the MW of 75 kDa.(PMID:22741101; 21795680).

Applications

Tested applications:	ELISA, WB, IP, IHC
Cited applications:	WB
Species specificity:	Human, Mouse, Zebrafish; other species not tested.
Cited species:	Mouse
Calculated BACE1 MW:	501aa,56 kDa
Observed BACE1 MW:	70-75 kDa
Positive WB detected in	Mouse brain tissue, HeLa cells, human brain tissue, mouse pancreas tissue, zebrafish tissue
Positive IP detected in	Mouse brain tissue
Positive IHC detected in	Human pancreas cancer tissue
Recommended dilution:	WB: 1:200-1:2000 IP: 1:200-1:2000 IHC: 1:20-1:200

Application key: WB = Western blotting, IHC = Immunohistochemistry, IF = Immunofluorescence, IP = Immunoprecipitation

Immunogen information

Immunogen:	Ag3559
GenBank accession number:	BC036084
Gene ID (NCBI):	23621
Full name:	Beta-site APP-cleaving enzyme 1

Product information

Purification method:	Antigen affinity purification
Storage:	PBS with 0.02% sodium azide and 50% glycerol pH 7.3. Store at -20°C.