

RBMY1A1 Polyclonal Antibody

Catalog number: 14239-1-AP

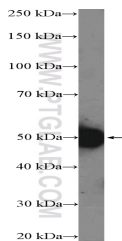
Size: 46 µg/150 µl

Source: Rabbit

Isotype: IgG

Synonyms:

RBMY1A1; hRBMV, RBM1,
RBM2, RBMY, RBMY1A1,
RBMV1C, RNA binding motif
protein 1, RNA binding motif
protein 2, YRRM1, YRRM2



COLO 320 cells were subjected to SDS PAGE followed by western blot with 14239-1-AP(RBMY1A1 Antibody) at dilution of 1:300

Applications

Tested applications:	ELISA, WB
Species specificity:	Human; other species not tested.
Calculated RBMY1A1 MW:	56 kDa
Observed RBMY1A1 MW:	50-55 kDa
Positive WB detected in	COLO 320 cells, NCCIT cell
Recommended dilution:	WB: 1:200-1:1000

Application key: WB = Western blotting, IHC = Immunohistochemistry, IF = Immunofluorescence, IP = Immunoprecipitation

Immunogen information

Immunogen:	Ag5493
GenBank accession number:	BC047768
Gene ID (NCBI):	5940
Full name:	RNA binding motif protein, Y-linked, family 1, member A1

Product information

Purification method:	Antigen affinity purification
Storage:	PBS with 0.1% sodium azide and 50% glycerol pH 7.3. Store at -20°C.