

DRG1 Polyclonal Antibody

Catalog number: 13190-1-AP

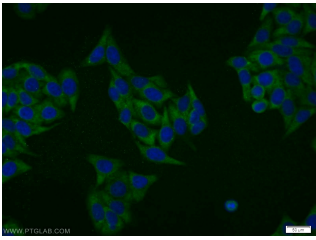
Size: 20 µg/150 µl

Source: Rabbit

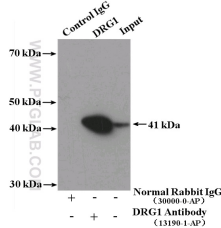
Isotype: IgG

Synonyms:

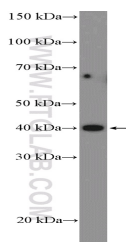
DRG1; DKFZp434N1827, DRG 1, DRG1, NEDD 3, NEDD3



Immunofluorescent analysis of HepG2 cells using 13190-1-AP (DRG1 Antibody) at dilution of 1:25 and Alexa Fluor 488-conjugated AffiniPure Goat Anti-Rabbit IgG(H+L)



IP Result of anti-DRG1 (IP:13190-1-AP, 4µg; Detection:13190-1-AP 1:600) with K-562 cells lysate 4000µg.



K-562 cells were subjected to SDS PAGE followed by western blot with 13190-1-AP (DRG1 Antibody) at dilution of 1:600

Applications

Tested applications:	ELISA, IF, IP, WB
Species specificity:	Human, Rat; other species not tested.
Calculated DRG1 MW:	367aa,41 kDa
Observed DRG1 MW:	41 kDa
Positive WB detected in	K-562 cells, HepG2 cells, P C-12 cells
Positive IP detected in	K-562 cells
Positive IF detected in	HepG2 cells
Recommended dilution:	WB: 1:200-1:2000
	IP: 1:200-1:2000
	IF: 1:10-1:100

Application key: WB = Western blotting, IHC = Immunohistochemistry, IF = Immunofluorescence, IP = Immunoprecipitation

Immunogen information

Immunogen:	Ag3866
GenBank accession number:	BC020803
Gene ID (NCBI):	4733
Full name:	Developmentally regulated GTP binding protein 1

Product information

Purification method:	Antigen affinity purification
Storage:	PBS with 0.02% sodium azide and 50% glycerol pH 7.3. Store at -20°C.