

## Syntaxin 12 Polyclonal Antibody

Catalog number: 14259-1-AP

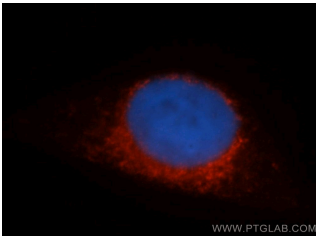
Size: 25 µg/150 µl

Source: Rabbit

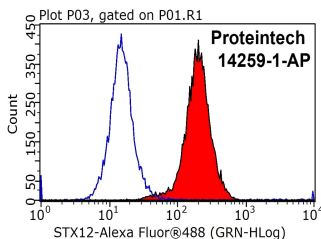
Isotype: IgG

Synonyms:

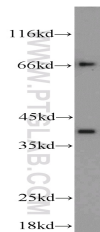
STX12; STX12, STX13, STX14,  
syntaxin 12



Immunofluorescent analysis of HepG2 cells, using STX12 antibody 14259-1-AP at 1:50 dilution and Rhodamine-labeled goat anti-rabbit IgG (red). Blue pseudocolor = DAPI (fluorescent DNA dye).



1X10<sup>6</sup> HepG2 cells were stained with 0.2µg STX12 antibody (14259-1-AP, red) and control antibody (blue). Fixed with 90% MeOH blocked with 3% BSA (30 min). Alexa Fluor 488-conjugated AffiniPure Goat Anti-Rabbit IgG(H+L) with dilution 1:100.



mouse brain tissue were subjected to SDS PAGE followed by western blot with 14259-1-AP(STX12 antibody) at dilution of 1:1000

### Background

Syntaxin 12 (STX12), also known as STX13 or STX14, is a 276 amino acid single-pass type IV membrane protein that belongs to the syntaxin family. It is a broadly and differentially expressed SNARE protein, highly enriched in brain tissue. STX12 is localized to early and recycling endosomes and is involved in the recycling of plasma membrane proteins. It also has a role in the trafficking of MMP during degradation of ECM substrates and subsequent cellular invasion. (PMID: 9507000; 9553086; 19910495) This antibody recognizes a major 39 kDa band of endogenous STX12. In some cases, two additional bands of 33 kDa and 66 kDa could also be detected, which most likely represent a degradation product and a SNARE complex respectively (PMID: 9817754).

### Applications

Tested applications:	ELISA, WB, IHC, IF, FC
Cited applications:	IF, WB
Species specificity:	Human, Mouse, Rat; other species not tested.
Cited species:	Human
Calculated Syntaxin 12 MW:	32 kDa
Observed Syntaxin 12 MW:	33kd, 39kd, 66kd
Positive WB detected in	Mouse brain tissue, BxPC-3 cells, human brain tissue, human heart tissue, mouse heart tissue
Positive IHC detected in	Human lung cancer tissue, human brain tissue, human kidney tissue, human pancreas tissue
Positive IF detected in	HepG2 cells
Positive FC detected in	HepG2 cells
Recommended dilution:	WB: 1:500-1:5000 IHC: 1:20-1:200 IF: 1:20-1:200 FC: N/A

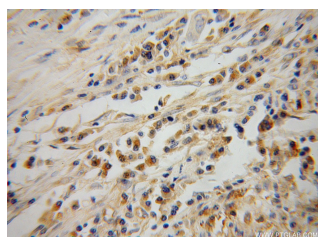
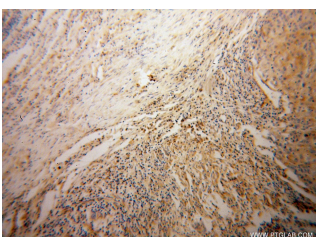
Application key: WB = Western blotting, IHC = Immunohistochemistry, IF = Immunofluorescence, IP = Immunoprecipitation

### Immunogen information

Immunogen:	Ag5532
GenBank accession number:	BC046999
Gene ID (NCBI):	23673
Full name:	Syntaxin 12

### Product information

Purification method:	Antigen affinity purification
Storage:	PBS with 0.02% sodium azide and 50% glycerol pH 7.3. Store at -20°C.



**Immunohistochemical of  
paraffin-embedded human  
lung cancer using 14259-1-  
AP(STX12 antibody) at  
dilution of 1:100 (under 10x  
lens)**

**Immunohistochemical of  
paraffin-embedded human  
lung cancer using 14259-1-  
AP(STX12 antibody) at  
dilution of 1:100 (under 40x  
lens)**