

## ARL4C Polyclonal Antibody

Catalog number: 10202-1-AP

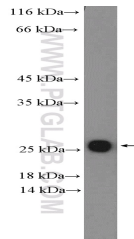
Size: 20 µg/150 µl

Source: Rabbit

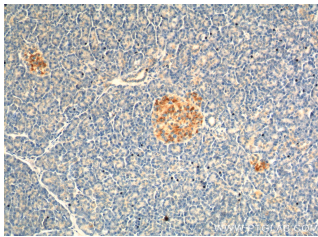
Isotype: IgG

Synonyms:

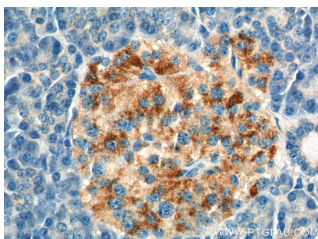
ARL4C; ARL4C, ARL7, LAK



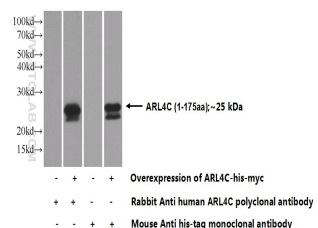
HUVEC cells were subjected to SDS PAGE followed by western blot with 10202-1-AP( ARL4C Antibody) at dilution of 1:600



Immunohistochemistry of paraffin-embedded human pancreas tissue slide using 10202-1-AP( ARL4C Antibody) at dilution of 1:50 (under 10x lens).



Immunohistochemistry of paraffin-embedded human pancreas tissue slide using 10202-1-AP( ARL4C Antibody) at dilution of 1:50 (under 40x lens).



Transfected HEK-293 cells were subjected to SDS PAGE followed by western blot with

### Applications

Tested applications:	ELISA, IHC, WB
Cited applications:	FC, IF
Species specificity:	Human; other species not tested.
Cited species:	Mouse
Calculated ARL4C MW:	21.4 kDa
Observed ARL4C MW:	21-25 kDa
Positive WB detected in	HUVEC cells, human brain tissue, Transfected HEK-293 cells
Positive IHC detected in	Human pancreas tissue, human colon cancer tissue
Recommended dilution:	WB: 1:200-1:2000 IHC: 1:20-1:200

Application key: WB = Western blotting, IHC = Immunohistochemistry, IF = Immunofluorescence, IP = Immunoprecipitation

### Immunogen information

Immunogen:	Ag0246
GenBank accession number:	BC001051
Gene ID (NCBI):	10123
Full name:	ADP-ribosylation factor-like 4C

### Product information

Purification method:	Antigen affinity purification
Storage:	PBS with 0.1% sodium azide and 50% glycerol pH 7.3. Store at -20°C.

**10202-1-AP( ARL4C Antibody)**  
**at dilution of 1:1000**