

CPI17 Polyclonal Antibody

Catalog number: 11658-1-AP

Size: 20 µg/150 µl

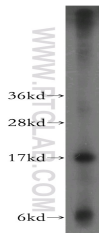
Source: Rabbit

Isotype: IgG

Synonyms:

PPP1R14A; CPI 17, CPI17,

PPP1INL, PPP1R14A



HepG2 cells were subjected to SDS PAGE followed by western blot with 11658-1-AP(PPP1R14A antibody) at dilution of 1:400

Applications

Tested applications:	ELISA, WB
Species specificity:	Human,Mouse,Rat; other species not tested.
Calculated CPI17 MW:	147aa,17kd
Observed CPI17 MW:	17kd
Positive WB detected in	HepG2 cells, HeLa cells, human colon tissue, PC-3 cells
Recommended dilution:	WB: 1:1000-1:10000

Application key: WB = Western blotting, IHC = Immunohistochemistry, IF = Immunofluorescence, IP = Immunoprecipitation

Immunogen information

Immunogen:	Ag2237
GenBank accession number:	BC021089
Gene ID (NCBI):	94274
Full name:	Protein phosphatase 1, regulatory (inhibitor) subunit 14A

Product information

Purification method:	Antigen affinity purification
Storage:	PBS with 0.1% sodium azide and 50% glycerol pH 7.3. Store at -20°C.