

## PPP1R7 Polyclonal Antibody

Catalog number: 11664-1-AP

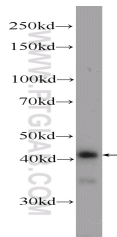
Size: 20 µg/150 µl

Source: Rabbit

Isotype: IgG

Synonyms:

PPP1R7; PPP1R7, SDS22



mouse liver tissue were subjected to SDS PAGE followed by western blot with 11664-1-AP( PPP1R7 Antibody) at dilution of 1:600

### Applications

Tested applications:	ELISA, WB
Species specificity:	Human, Mouse; other species not tested.
Calculated PPP1R7 MW:	360aa,40 kDa
Observed PPP1R7 MW:	44 kDa
Positive WB detected in	Mouse liver tissue, HEK-293 cells, PC-3 cells
Recommended dilution:	WB: 1:200-1:2000

Application key: WB = Western blotting, IHC = Immunohistochemistry, IF = Immunofluorescence, IP = Immunoprecipitation

### Immunogen information

Immunogen:	Ag2263
GenBank accession number:	BC000910
Gene ID (NCBI):	5510
Full name:	Protein phosphatase 1, regulatory (inhibitor) subunit 7

### Product information

Purification method:	Antigen affinity purification
Storage:	PBS with 0.02% sodium azide and 50% glycerol pH 7.3. Store at -20°C.