

DGKE Polyclonal Antibody

Catalog number: 11900-1-AP

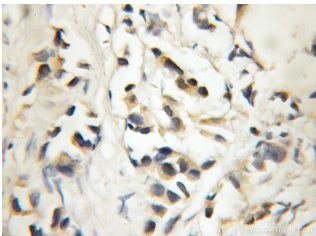
Size: 50 µg/150 µl

Source: Rabbit

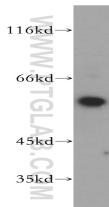
Isotype: IgG

Synonyms:

DGKE; DAG kinase epsilon,
DAGK5, DAGK6, DGK, DGK
epsilon, DGKE, Diacylglycerol
kinase epsilon, Diglyceride
kinase epsilon



Immunohistochemical of paraffin-embedded human prostate cancer using 11900-1-AP (DGKE antibody) at dilution of 1:50 (under 10x lens)



HEK-293 cells were subjected to SDS PAGE followed by western blot with 11900-1-AP (DGKE antibody) at dilution of 1:400

Background

DGKE (Diacylglycerol kinase epsilon) is also named as DAGK5 and belongs to the eukaryotic diacylglycerol kinase family. It may be involved mainly in the regeneration of phosphatidylinositol (PI) from diacylglycerol in the PI-cycle during cell signal transduction (PMID:16689942). When expressed in mammalian cells, DGK-epsilon showed specificity for arachidonyl-containing diacylglycerol.

Applications

Tested applications:	ELISA, WB, IHC
Species specificity:	Human, Mouse, Rat; other species not tested.
Calculated DGKE MW:	64kd
Observed DGKE MW:	60-64kd
Positive WB detected in	HEK-293 cells, human brain tissue
Positive IHC detected in	Human prostate cancer tissue
Recommended dilution:	WB: 1:500-1:5000 IHC: 1:20-1:200

Application key: WB = Western blotting, IHC = Immunohistochemistry, IF = Immunofluorescence, IP = Immunoprecipitation

Immunogen information

Immunogen:	Ag2512
GenBank accession number:	BC022297
Gene ID (NCBI):	8526
Full name:	Diacylglycerol kinase, epsilon 64kDa

Product information

Purification method:	Antigen affinity purification
Storage:	PBS with 0.1% sodium azide and 50% glycerol pH 7.3. Store at -20°C.