

EPAC1 Polyclonal Antibody

Catalog number: 12572-1-AP

Size: 81 µg/150 µl

Source: Rabbit

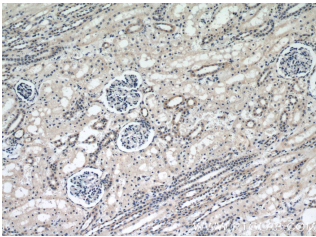
Isotype: IgG

Synonyms:

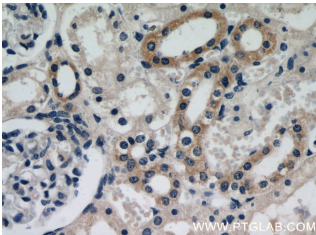
RAPGEF3; CAMP GEF1, CGEF1,

EPAC, EPAC 1, EPAC1,

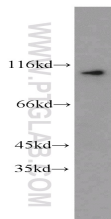
HSU79275, RAPGEF3, EPAC1



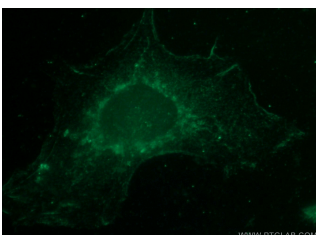
Immunohistochemical of paraffin-embedded human kidney using 12572-1-AP (RAPGEF3 antibody) at dilution of 1:50 (under 10x lens)



Immunohistochemical of paraffin-embedded human kidney using 12572-1-AP (RAPGEF3 antibody) at dilution of 1:50 (under 40x lens)



CHO cells were subjected to SDS PAGE followed by western blot with 12572-1-AP (RAPGEF3 antibody) at dilution of 1:1000



Immunofluorescent analysis of A431 cells using 12572-1-

Applications

Tested applications:	ELISA, WB, IHC, IF, IP
Species specificity:	Human, Mouse, Rat, hamster; other species not tested.
Calculated EPAC1 MW:	881aa, 99 kDa
Observed EPAC1 MW:	104 kDa
Positive WB detected in:	CHO cells
Positive IP detected in:	Mouse kidney tissue
Positive IHC detected in:	Human kidney tissue, human heart tissue, human skeletal muscle tissue, human thyroid tissue
Positive IF detected in:	A431 cells
Recommended dilution:	WB: 1:500-1:5000
	IP: 1:200-1:2000
	IHC: 1:20-1:200
	IF: 1:10-1:100

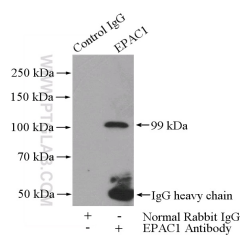
Application key: WB = Western blotting, IHC = Immunohistochemistry, IF = Immunofluorescence, IP = Immunoprecipitation

Immunogen information

Immunogen:	Ag3240
GenBank accession number:	BC017728
Gene ID (NCBI):	10411
Full name:	Rap guanine nucleotide exchange factor (GEF) 3

Product information

Purification method:	Antigen affinity purification
Storage:	PBS with 0.1% sodium azide and 50% glycerol pH 7.3. Store at -20°C.



IP Result of anti-RAPGEF3 (IP:12572-1-AP, 4ug)

AP(RAPGEF3 Antibody) at Detection:12572-1-AP 1:600)
dilution of 1:25 and FITC-Goat with mouse kidney tissue
anti-Rabbit IgG lysate 4800ug.