

MARVELD2 Polyclonal Antibody

Catalog number: 13515-1-AP

Size: 97 µg/150 µl

Source: Rabbit

Isotype: IgG

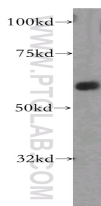
Synonyms:

MARVELD2; DFNB49, FLJ30532,

MARVD2, MARVEL domain

containing 2, MARVELD2,

MRVLDC2, Tric, Tricellulin



mouse kidney tissue were subjected to SDS PAGE followed by western blot with 13515-1-AP(MARVELD2 antibody) at dilution of 1:800

Background

MARVELD2, also named as Tricellulin or TRIC, is a 558 amino acid protein, which contains one MARVEL domain. MARVELD2 localizes the cell membrane and plays a role in the formation of the epithelial barriers. MARVELD2, is a first integral membrane protein that is concentrated at the vertically oriented tight junction strands of tricellular contacts. MARVELD2 may be a component to maintain the integrity for peripheral nervous system myelin function and morphology.

Applications

Tested applications:	ELISA, WB
Cited applications:	WB
Species specificity:	Human, Mouse, Rat; other species not tested.
Cited species:	Mouse
Calculated MARVELD2 MW:	558aa, 64 kDa
Observed MARVELD2 MW:	64kd
Positive WB detected in	Mouse kidney tissue, HEK-293 cells
Recommended dilution:	WB: 1:500-1:5000

Application key: WB = Western blotting, IHC = Immunohistochemistry, IF = Immunofluorescence, IP = Immunoprecipitation

Immunogen information

Immunogen:	Ag4446
GenBank accession number:	BC033689
Gene ID (NCBI):	153562
Full name:	MARVEL domain containing 2

Product information

Purification method:	Antigen affinity purification
Storage:	PBS with 0.02% sodium azide and 50% glycerol pH 7.3. Store at -20°C.