

PSMD12 Polyclonal Antibody

Catalog number: 11412-1-AP

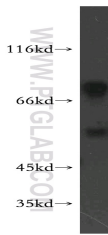
Size: 20 µg/150 µl

Source: Rabbit

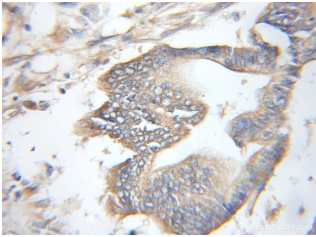
Isotype: IgG

Synonyms:

PSMD12; MGC75406; Rpn5;
p55



HepG2 cells were subjected to SDS PAGE followed by western blot with 11412-1-AP (PSMD12 Antibody) at dilution of 1:400



Immunohistochemistry of paraffin-embedded human pancreas cancer using 11412-1-AP (PSMD12 Antibody) at Dilution 1:50 (under 10x lens)

Applications

Tested applications:	ELISA, WB, IHC
Species specificity:	Human, mouse, rat; other species not tested.
Positive WB detected in:	HepG2 cells
Calculated PSMD12 MW:	456aa, 53kd
Observed PSMD12 MW:	55kd
Positive IHC detected in:	Human pancreas cancer
Recommended dilution:	WB: 1:200-1:1000 IHC: 1:20-1:200

Application key: WB = Western blotting, IHC = Immunohistochemistry, IF = Immunofluorescence, IP = Immunoprecipitation, FC = Flow cytometry

Immunogen information

Immunogen:	Ag1957
GenBank accession number:	BC019062
Gene ID (NCBI):	5718
Full name:	Proteasome (prosome, macropain) 26S subunit, non-ATPase, 12

Product information

Purification method:	Antigen affinity purification
Storage:	PBS with 0.02% sodium azide and 50% glycerol pH 7.3. Store at -20°C.