

CAPG Polyclonal Antibody

Catalog number: 10194-1-AP

Size: 30 µg/150 µl

Source: Rabbit

Isotype: IgG

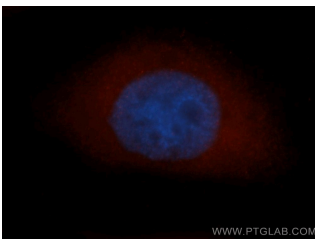
Synonyms:

CAPG; Actin regulatory protein

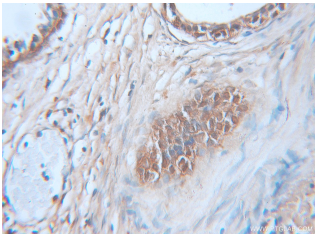
CAP G, AFCP, CAPG,

Macrophage capping protein,

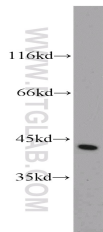
MCP



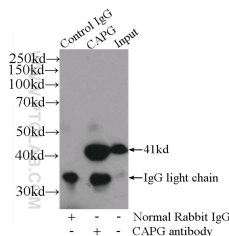
Immunofluorescent analysis of MCF-7 cells, using CAPG antibody 10194-1-AP at 1:50 dilution and Rhodamine-labeled goat anti-rabbit IgG (red). Blue pseudocolor = DAPI (fluorescent DNA dye).



Immunohistochemical of paraffin-embedded human prostate cancer using 10194-1-AP (CAPG antibody) at dilution of 1:100 (under 10x lens)



HeLa cells were subjected to SDS PAGE followed by western blot with 10194-1-AP (CAPG antibody) at dilution of 1:1000



Background

CapG (gelsolin-like actin-capping protein) is a member of the gelsolin superfamily proteins, which regulates actin filament length by capping or severing filaments. Studies have shown a role for CapG in regulating cell motility. The expression of CapG is upregulated under hypoxia and in turn increases the motility of cells. Recently it has been reported that the overexpression of CapG is associated with the progression of lung adenocarcinoma as well as lymphatic invasion status of cholangiocarcinoma, which may be used for prognosis of these tumors.(21908955,22155129)

Applications

Tested applications:	ELISA, WB, IHC, IF, IP
Cited applications:	IHC, WB
Species specificity:	Human, Mouse, Rat; other species not tested.
Cited species:	Human, mouse
Calculated CAPG MW:	39 kDa
Observed CAPG MW:	39-42kd
Positive WB detected in	HeLa cells, HL-60 cells, mouse heart tissue, mouse thymus tissue, rat heart tissue, rat lung tissue
Positive IP detected in	Mouse heart tissue
Positive IHC detected in	Human prostate cancer tissue, human tonsillitis tissue
Positive IF detected in	MCF-7 cells
Recommended dilution:	WB: 1:500-1:5000 IP: 1:200-1:2000 IHC: 1:20-1:200 IF: 1:20-1:200

Application key: WB = Western blotting, IHC = Immunohistochemistry, IF = Immunofluorescence, IP = Immunoprecipitation

Immunogen information

Immunogen:	Ag0248
GenBank accession number:	BC000728
Gene ID (NCBI):	822
Full name:	Capping protein (actin filament), gelsolin-like

Product information

Purification method:	Antigen affinity purification
Storage:	PBS with 0.1% sodium azide and 50% glycerol pH 7.3. Store at -20°C.

**IP Result of anti-CAPG
(IP:10194-1-AP, 4ug;
Detection:10194-1-AP 1:500)
with mouse heart tissue lysate
4000ug.**