

DSE Polyclonal Antibody

Catalog number: 10452-1-AP

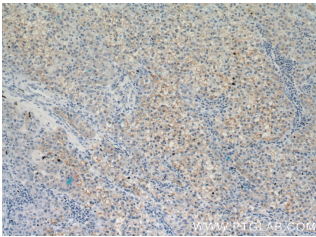
Size: 20 µg/150 µl

Source: Rabbit

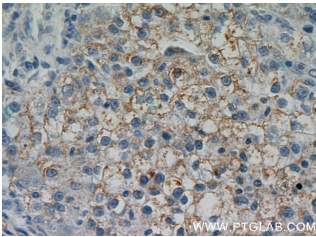
Isotype: IgG

Synonyms:

DSE; dermatan sulfate epimerase, DS epimerase, DSE, DSEPI, SART 2, SART2



Immunohistochemical of paraffin-embedded human liver cancer using 10452-1-AP(DSE antibody) at dilution of 1:50 (under 10x lens)



Immunohistochemical of paraffin-embedded human liver cancer using 10452-1-AP(DSE antibody) at dilution of 1:50 (under 40x lens)

Background

DSE, also named as SART2 and DSEPI, is an enzyme that converts D-glucuronic acid to L-iduronic acid residues in dermatan sulphate biosynthesis. It is also identified to be a tumour-associated antigen. DSE is recognized by cytotoxic T cells (CTLs) and its enhanced expression in many cancers has been reported. DSE is a potential candidate for a tumour antigen with immunogenicity.

Applications

Tested applications:	ELISA, IHC
Cited applications:	IF, IHC
Species specificity:	Human; other species not tested.
Cited species:	Human
Calculated DSE MW:	958 aa,110 kDa
Observed DSE MW:	
Positive IHC detected in	Human liver cancer tissue
Recommended dilution:	IHC: 1:20-1:200

Application key: WB = Western blotting, IHC = Immunohistochemistry, IF = Immunofluorescence, IP = Immunoprecipitation

Immunogen information

Immunogen:	Ag0695
GenBank accession number:	BC039245
Gene ID (NCBI):	29940
Full name:	Dermatan sulfate epimerase

Product information

Purification method:	Antigen affinity purification
Storage:	PBS with 0.1% sodium azide and 50% glycerol pH 7.3. Store at -20°C.