

NELL2 Polyclonal Antibody

Catalog number: 11268-1-AP

Size: 44 µg/150 µl

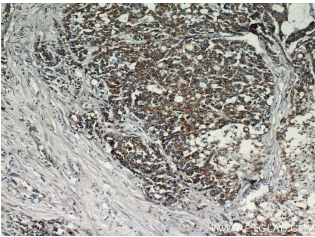
Source: Rabbit

Isotype: IgG

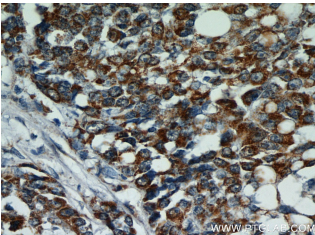
Synonyms:

NELL2; NEL like 2 (chicken),

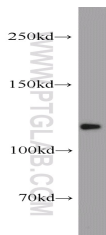
NEL like protein 2, Nel related protein 2, NELL2, NRP2



Immunohistochemical of paraffin-embedded human colon cancer using 11268-1-AP(NELL2 antibody) at dilution of 1:50 (under 10x lens)



Immunohistochemical of paraffin-embedded human colon cancer using 11268-1-AP(NELL2 antibody) at dilution of 1:50 (under 40x lens)



mouse brain tissue were subjected to SDS PAGE followed by western blot with 11268-1-AP(NELL2 antibody) at dilution of 1:1000

Applications

Tested applications:	ELISA, WB, IHC
Species specificity:	Human, Mouse, Rat; other species not tested.
Calculated NELL2 MW:	91 kDa
Observed NELL2 MW:	100-110 kDa
Positive WB detected in	Mouse brain tissue, human brain tissue
Positive IHC detected in	Human colon cancer tissue, human gliomas tissue
Recommended dilution:	WB: 1:500-1:5000 IHC: 1:20-1:200

Application key: WB = Western blotting, IHC = Immunohistochemistry, IF = Immunofluorescence, IP = Immunoprecipitation

Immunogen information

Immunogen:	Ag1793
GenBank accession number:	BC020544
Gene ID (NCBI):	4753
Full name:	NEL-like 2 (chicken)

Product information

Purification method:	Antigen affinity purification
Storage:	PBS with 0.02% sodium azide and 50% glycerol pH 7.3. Store at -20°C.