

SCMH1 Polyclonal Antibody

Catalog number: 11489-1-AP

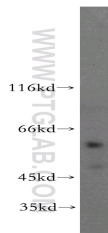
Size: 22 µg/150 µl

Source: Rabbit

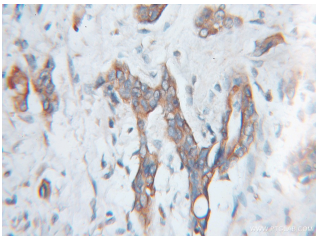
Isotype: IgG

Synonyms:

SCMH1; Scml3



human lung tissue were subjected to SDS PAGE followed by western blot with 11489-1-AP(SCMH1 Antibody) at dilution of 1:800



Immunohistochemistry of paraffin-embedded human pancreas cancer using 11489-1-AP(SCMH1 Antibody) at Dilution 1:100 (under 10x lens)

Applications

Tested applications:	ELISA, WB, IHC
Species specificity:	Human, mouse, rat; other species not tested.
Positive WB detected in:	Human lung tissue, HT-1080 cells
Calculated SCMH1 MW:	599aa,66kd;660aa,73kd
Observed SCMH1 MW:	58kd
Positive IHC detected in:	Human pancreas cancer
Recommended dilution:	WB: 1:200-1:2000 IHC: 1:50-1:200

Application key: WB = Western blotting, IHC = Immunohistochemistry, IF = Immunofluorescence, IP = Immunoprecipitation, FC = Flow cytometry

Immunogen information

Immunogen:	Ag1972
GenBank accession number:	BC021252
Gene ID (NCBI):	22955
Full name:	Sex comb on midleg homolog 1 (Drosophila)

Product information

Purification method:	Antigen affinity purification
Storage:	PBS with 0.02% sodium azide and 50% glycerol pH 7.3. Store at -20°C.