

FGL2 Polyclonal Antibody

Catalog number: 11827-1-AP

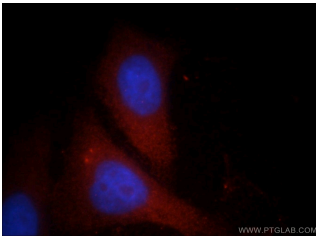
Size: 27 µg/150 µl

Source: Rabbit

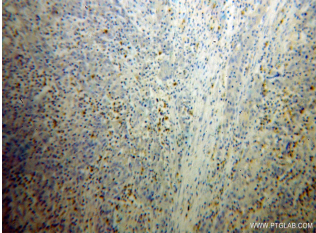
Isotype: IgG

Synonyms:

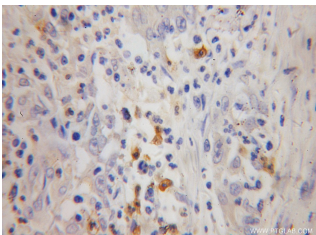
FGL2; FGL2, FGL-2, fibrinogen like 2, Fibrinogen like protein 2, Fibroleukin, pT49, T49



Immunofluorescent analysis of HepG2 cells, using FGL2 antibody 11827-1-AP at 1:25 dilution and Rhodamine-labeled goat anti-rabbit IgG (red). Blue pseudocolor = DAPI (fluorescent DNA dye).



Immunohistochemical of paraffin-embedded human colon cancer using 11827-1-AP(FGL2 antibody) at dilution of 1:50 (under 10x lens)



Immunohistochemical of paraffin-embedded human colon cancer using 11827-1-AP(FGL2 antibody) at dilution of 1:50 (under 40x lens)



human ileum tissue were

Background

FGL2, also known as fibroleukina, is secreted by T lymphocytes, constitutively expressed in cytotoxic T cells. FGL2 forms a tetrameric complex which is stabilized by interchain disulfide bonds and it exerts immunosuppressive effects on both T cell proliferation and dendritic cell maturation. The protein may play a role in physiologic functions at mucosal sites. It is migrated as a 70kd band in western blotting analysis.

Applications

Tested applications:	ELISA, WB, IHC, IF
Species specificity:	Human, Mouse, Rat; other species not tested.
Calculated FGL2 MW:	50 kDa
Observed FGL2 MW:	70 kDa, 50-60 kDa
Positive WB detected in	Human ileum tissue, mouse thymus tissue
Positive IHC detected in	Human colon cancer tissue
Positive IF detected in	HepG2 cells
Recommended dilution:	WB: 1:500-1:5000 IHC: 1:20-1:200 IF: 1:10-1:100

Application key: WB = Western blotting, IHC = Immunohistochemistry, IF = Immunofluorescence, IP = Immunoprecipitation

Immunogen information

Immunogen:	Ag2395
GenBank accession number:	BC017813
Gene ID (NCBI):	10875
Full name:	Fibrinogen-like 2

Product information

Purification method:	Antigen affinity purification
Storage:	PBS with 0.1% sodium azide and 50% glycerol pH 7.3. Store at -20°C.

subjected to SDS PAGE
followed by western blot with
11827-1-AP(FGL2 antibody) at
dilution of 1:400