

CYB5R1 Polyclonal Antibody

Catalog number: 11807-1-AP

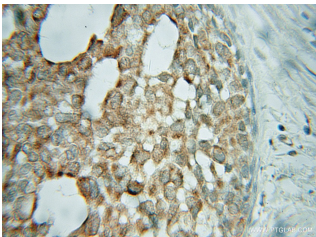
Size: 22 µg/150 µl

Source: Rabbit

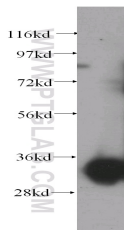
Isotype: IgG

Synonyms:

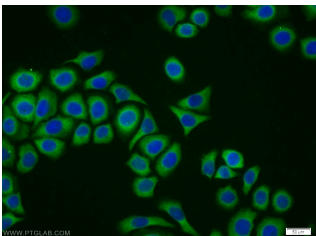
CYB5R1; B5R.1, CYB5R1,
cytochrome b5 reductase 1,
humb5R2, NADH cytochrome
b5 reductase 1, NQO3A2



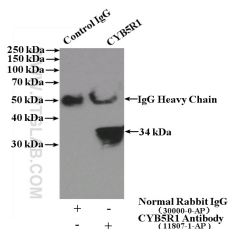
Immunohistochemical of paraffin-embedded human breast cancer using 11807-1-AP(CYB5R1 antibody) at dilution of 1:50 (under 10x lens)



human placenta tissue were subjected to SDS PAGE followed by western blot with 11807-1-AP(CYB5R1 antibody) at dilution of 1:500



Immunofluorescent analysis of PC-3 cells using 11807-1-AP(CYB5R1 Antibody) at dilution of 1:25 and Alexa Fluor 488-conjugated AffiniPure Goat Anti-Rabbit IgG(H+L)



Applications

Tested applications:	ELISA, WB, IHC, IF, IP
Species specificity:	Human, Mouse, Rat; other species not tested.
Calculated CYB5R1 MW:	305aa, 34 kDa
Observed CYB5R1 MW:	34 kDa
Positive WB detected in	Human placenta tissue, human brain tissue, PC-3 cells
Positive IP detected in	Human placenta tissue
Positive IHC detected in	Human breast cancer tissue
Positive IF detected in	PC-3 cells
Recommended dilution:	WB: 1:1000-1:10000 IP: 1:500-1:5000 IHC: 1:20-1:200 IF: 1:10-1:100

Application key: WB = Western blotting, IHC = Immunohistochemistry, IF = Immunofluorescence, IP = Immunoprecipitation

Immunogen information

Immunogen:	Ag2475
GenBank accession number:	BC018732
Gene ID (NCBI):	51706
Full name:	Cytochrome b5 reductase 1

Product information

Purification method:	Antigen affinity purification
Storage:	PBS with 0.1% sodium azide and 50% glycerol pH 7.3. Store at -20°C.

**IP Result of anti-CYB5R1
(IP:11807-1-AP, 4ug;
Detection:11807-1-AP 1:1000)
with human placenta tissue
lysate 1520ug.**