

## IκB beta Polyclonal Antibody

Catalog number: 12660-1-AP

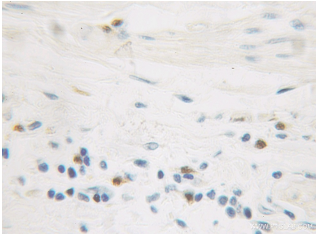
Size: 31 µg/150 µl

Source: Rabbit

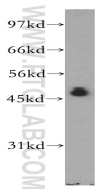
Isotype: IgG

Synonyms:

NFKB1B; I kappa B beta, IκappaBbeta, IκB B, IκB beta, IκBB, NF kappa B inhibitor beta, NF kappa B1B, NFKB1B, TR interacting protein 9, TRIP 9, TRIP9



Immunohistochemical of paraffin-embedded human colon cancer using 12660-1-AP (NFKB1B antibody) at dilution of 1:100 (under 10x lens)



HeLa cells were subjected to SDS PAGE followed by western blot with 12660-1-AP (NFKB1B antibody) at dilution of 1:500

### Applications

<b>Tested applications:</b>	ELISA, WB, IHC
<b>Species specificity:</b>	Human, Mouse, Rat; other species not tested.
<b>Calculated IκB beta MW:</b>	356aa, 38 kDa
<b>Observed IκB beta MW:</b>	46 kDa
<b>Positive WB detected in</b>	HeLa cells, Jurkat cells
<b>Positive IHC detected in</b>	Human colon cancer tissue, human endometrial cancer tissue
<b>Recommended dilution:</b>	WB: 1:500-1:5000 IHC: 1:20-1:200

Application key: WB = Western blotting, IHC = Immunohistochemistry, IF = Immunofluorescence, IP = Immunoprecipitation

### Immunogen information

<b>Immunogen:</b>	Ag3340
<b>GenBank accession number:</b>	BC015528
<b>Gene ID (NCBI):</b>	4793
<b>Full name:</b>	Nuclear factor of kappa light polypeptide gene enhancer in B-cells inhibitor, beta

### Product information

<b>Purification method:</b>	Antigen affinity purification
<b>Storage:</b>	PBS with 0.1% sodium azide and 50% glycerol pH 7.3. Store at -20°C.