

## KIF22 Polyclonal Antibody

Catalog number: 13403-1-AP

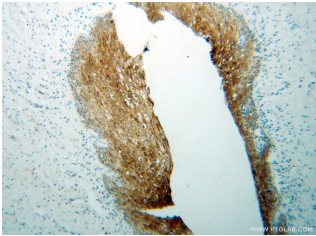
Size: 58 µg/150 µl

Source: Rabbit

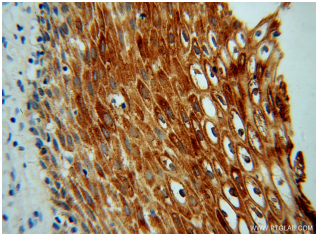
Isotype: IgG

Synonyms:

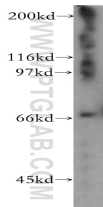
KIF22; KID, KIF22, kinesin family member 22, Kinesin like protein 4, Kinesin like protein KIF22, KNSL4, OBP, OBP 1, OBP 2



Immunohistochemical of paraffin-embedded human cervical cancer using 13403-1-AP (KIF22 antibody) at dilution of 1:100 (under 10x lens)



Immunohistochemical of paraffin-embedded human cervical cancer using 13403-1-AP (KIF22 antibody) at dilution of 1:100 (under 40x lens)



human heart tissue were subjected to SDS PAGE followed by western blot with 13403-1-AP (KIF22 antibody) at dilution of 1:400



### Background

KIF22, also known as KID (kinesin-like DNA-binding protein), is a kinesin-like DNA-binding protein known to be involved in chromosome movement during mitosis. KIF22 is a nuclear protein regulated by SIAH-1, whose level fluctuate in a cell cycle-dependent manner, increasing during pre-mitotic phases and greatly decreasing during mitosis. KIF22 localizes to the nucleus of the interphase cells upon entry into mitosis and displays some punctate cytoplasmic staining. Defects in KIF22 are the cause of spondyloepimetaphyseal dysplasia with joint laxity, type 2 (SEMDJL2).

### Applications

|                           |  |
|---------------------------|--|
| Tested applications:      | ELISA, WB, IHC, IP                           |
| Cited applications:       | WB   |
| Species specificity:      | Human, Mouse, Rat; other species not tested. |
| Cited species:            | Human  |
| Calculated KIF22 MW:      | 665aa, 73 kDa                                |
| Observed KIF22 MW:        | 73 kDa                                       |
| Positive WB detected in:  | Human heart tissue                           |
| Positive IP detected in:  | HeLa cells                                   |
| Positive IHC detected in: | Human cervical cancer tissue                 |
| Recommended dilution:     | WB: 1:500-1:5000                             |
|                           | IP: 1:200-1:1000                             |
|                           | IHC: 1:20-1:200                              |

Application key: WB = Western blotting, IHC = Immunohistochemistry, IF = Immunofluorescence, IP = Immunoprecipitation

### Immunogen information

|                           |                          |
|---------------------------|--------------------------|
| Immunogen:                | Ag4254                   |
| GenBank accession number: | BC028155                 |
| Gene ID (NCBI):           | 3835                     |
| Full name:                | Kinesin family member 22 |

### Product information

|                      |  |
|----------------------|--|
| Purification method: | Antigen affinity purification  |
| Storage:             | PBS with 0.02% sodium azide and 50% glycerol pH 7.3. Store at -20°C. |

**IP Result of anti-KIF22**  
**(IP:13403-1-AP, 4ug;**  
**Detection:13403-1-AP 1:300)**  
**with HeLa cells lysate 4000ug.**