

## LSAMP Polyclonal Antibody

Catalog number: 13600-1-AP

Size: 20 µg/150 µl

Source: Rabbit

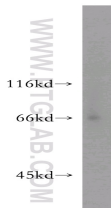
Isotype: IgG

Synonyms:

LSAMP; FLJ54658, IgLON family

member 3, IGLON3, LAMP,

LSAMP



human brain tissue were subjected to SDS PAGE followed by western blot with 13600-1-AP (LSAMP antibody) at dilution of 1:300

### Background

LSAMP, also known as LAMP, is a 64-68 kDa heavily glycosylated neural cell adhesion molecule expressed on the neuronal dendrites and somata (PMID: 1688937; 8666243). LSAMP is a member of the IgLON family. The amino acid sequence of LSAMP is highly conserved among species. Human LSAMP share 99% amino acid sequence identity with rodent LSAMP. The impact of LSAMP protein on neurite outgrowth and neuronal connectivity has been established in a wide spectrum of psychiatric disorders in humans (PMID: 26136648). In mice, lack of LSAMP protein seemingly leads to a deterioration in the ability to adapt to novel stressful environments and stimuli (PMID: 22155487).

### Applications

Tested applications:	ELISA, WB
Species specificity:	Human, Mouse, Rat; other species not tested.
Calculated LSAMP MW:	338aa, 37 kDa
Observed LSAMP MW:	64-68 kDa
Positive WB detected in	Human brain tissue, mouse brain tissue
Recommended dilution:	WB: 1:500-1:5000

Application key: WB = Western blotting, IHC = Immunohistochemistry, IF = Immunofluorescence, IP = Immunoprecipitation

### Immunogen information

Immunogen:	Ag4542
GenBank accession number:	BC033803
Gene ID (NCBI):	4045
Full name:	Limbic system-associated membrane protein

### Product information

Purification method:	Antigen affinity purification
Storage:	PBS with 0.02% sodium azide and 50% glycerol pH 7.3. Store at -20°C.