

## RAB39 Polyclonal Antibody

Catalog number: 13355-1-AP

Size: 33 µg/150 µl

Source: Rabbit

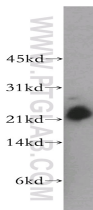
Isotype: IgG

Synonyms:

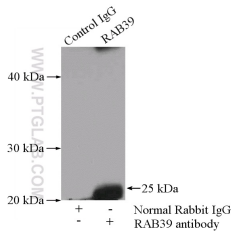
RAB39; Rab 39, RAB39,

RAB39A, Ras related protein

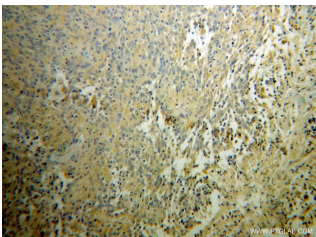
Rab 39A



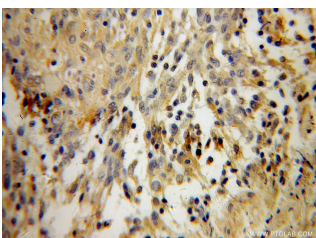
human brain tissue were subjected to SDS PAGE followed by western blot with 13355-1-AP(RAB39 antibody) at dilution of 1:500



IP Result of anti-RAB39 (IP:13355-1-AP, 4µg; Detection:13355-1-AP 1:500) with mouse brain tissue lysate 4000ug.



Immunohistochemical of paraffin-embedded human gliomas using 13355-1-AP(RAB39 antibody) at dilution of 1:100 (under 10x lens)



Immunohistochemical of paraffin-embedded human

### Applications

Tested applications:	ELISA, WB, IHC, IP
Species specificity:	Human, Mouse, Rat; other species not tested.
Calculated RAB39 MW:	217aa, 25 kDa
Observed RAB39 MW:	25 kDa
Positive WB detected in:	Human brain tissue, mouse brain tissue
Positive IP detected in:	Mouse brain tissue
Positive IHC detected in:	Human gliomas tissue, human brain tissue
Recommended dilution:	WB: 1:500-1:5000
	IP: 1:200-1:2000
	IHC: 1:20-1:200

Application key: WB = Western blotting, IHC = Immunohistochemistry, IF = Immunofluorescence, IP = Immunoprecipitation

### Immunogen information

Immunogen:	Ag4151
GenBank accession number:	BC028064
Gene ID (NCBI):	54734
Full name:	RAB39, member RAS oncogene family

### Product information

Purification method:	Antigen affinity purification
Storage:	PBS with 0.02% sodium azide and 50% glycerol pH 7.3. Store at -20°C.

gliomas using 13355-1-  
AP(RAB39 antibody) at  
dilution of 1:100 (under 40x  
lens)