

EME1 Polyclonal Antibody

Catalog number: 12975-1-AP

Size: 37 µg/150 µl

Source: Rabbit

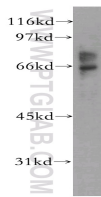
Isotype: IgG

Synonyms:

EME1; EME1, FLJ31364,

hMMS4, MMS4, MMS4

homolog, MMS4L



A375 cells were subjected to SDS PAGE followed by western blot with 12975-1-AP (EME1 antibody) at dilution of 1:500

Applications

Tested applications:	ELISA, WB
Species specificity:	Human, Mouse, Rat; other species not tested.
Calculated EME1 MW:	583aa, 65 kDa
Observed EME1 MW:	65 kDa
Positive WB detected in	A375 cells, human liver tissue
Recommended dilution:	WB: 1:200-1:2000

Application key: WB = Western blotting, IHC = Immunohistochemistry, IF = Immunofluorescence, IP = Immunoprecipitation

Immunogen information

Immunogen:	Ag3580
GenBank accession number:	BC016470
Gene ID (NCBI):	146956
Full name:	Essential meiotic endonuclease 1 homolog 1 (S. pombe)

Product information

Purification method:	Antigen affinity purification
Storage:	PBS with 0.1% sodium azide and 50% glycerol pH 7.3. Store at -20°C.