

Calpain 6 Polyclonal Antibody

Catalog number: 10120-1-AP

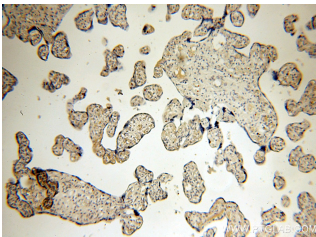
Size: 24 µg/150 µl

Source: Rabbit

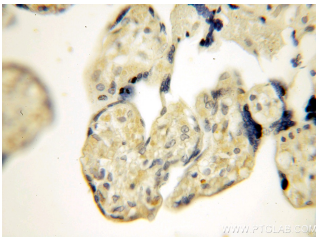
Isotype: IgG

Synonyms:

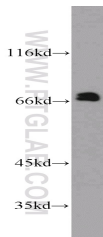
CAPN6; calpain 6, Calpain like protease X linked, Calpamodulin, CalpM, CANPX, CAPN6, CAPNX, DJ914P14.1



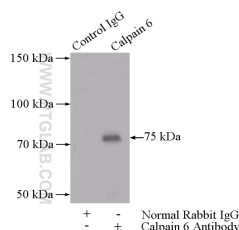
Immunohistochemical of paraffin-embedded human placenta using 10120-1-AP (CAPN6 antibody) at dilution of 1:50 (under 10x lens)



Immunohistochemical of paraffin-embedded human placenta using 10120-1-AP (CAPN6 antibody) at dilution of 1:50 (under 40x lens)



human placenta tissue were subjected to SDS PAGE followed by western blot with 10120-1-AP (CAPN6 antibody) at dilution of 1:300



IP Result of anti-CAPN6

Applications

Tested applications:	ELISA, IHC, WB, IP
Species specificity:	Human, Mouse, Rat; other species not tested.
Calculated Calpain 6 MW:	75 kDa
Observed Calpain 6 MW:	66-75 kDa
Positive WB detected in	Human placenta tissue, A549 cells
Positive IP detected in	Human placenta tissue
Positive IHC detected in	Human placenta tissue
Recommended dilution:	WB: 1:200-1:1000
	IP: 1:200-1:1000
	IHC: 1:20-1:200

Application key: WB = Western blotting, IHC = Immunohistochemistry, IF = Immunofluorescence, IP = Immunoprecipitation

Immunogen information

Immunogen:	Ag0160
GenBank accession number:	BC000730
Gene ID (NCBI):	827
Full name:	Calpain 6

Product information

Purification method:	Antigen affinity purification
Storage:	PBS with 0.1% sodium azide and 50% glycerol pH 7.3. Store at -20°C.

(IP:10120-1-AP, 4ug;
Detection:10120-1-AP 1:300)
with human placenta tissue
lysate 1520ug.