

WWP2 Polyclonal Antibody

Catalog number: 12197-1-AP

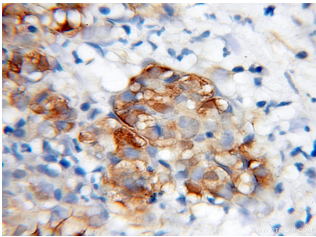
Size: 20 µg/150 µl

Source: Rabbit

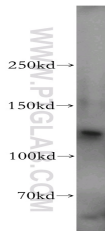
Isotype: IgG

Synonyms:

WWP2; AIP2, WW domain containing protein 2, WWP2, WWp2 like



Immunohistochemical of paraffin-embedded human pancreas cancer using 12197-1-AP(WWP2 antibody) at dilution of 1:100 (under 40x lens)



mouse liver tissue were subjected to SDS PAGE followed by western blot with 12197-1-AP(WWP2 antibody) at dilution of 1:500

Background

WWP2(WW domain-containing protein 2) is also named as AIP2 and belongs to the NEDD4-like protein family. It functions as an E3 ubiquitin ligase for PTEN that plays a vital role in tumour-cell survival and is also involved in regulating transcription, embryonic stem-cell fate, cellular transport and T-cell activation processes(PMID:21532586).WWP2, which specifically interacted with ES cell-specific transcription factor Oct-4 and promoted its ubiquitination both in vitro and in vivo, is a ubiquitously expressed protein and exists in both cytoplasmic and nuclear compartments in ES cells(PMID:15047715).

Applications

Tested applications:	ELISA, WB, IHC
Species specificity:	Human, Mouse; other species not tested.
Calculated WWP2 MW:	870aa,99 kDa
Observed WWP2 MW:	110-115 kDa
Positive WB detected in	Mouse liver tissue, A549 cells
Positive IHC detected in	Human pancreas cancer tissue
Recommended dilution:	WB: 1:200-1:2000 IHC: 1:20-1:200

Application key: WB = Western blotting, IHC = Immunohistochemistry, IF = Immunofluorescence, IP = Immunoprecipitation

Immunogen information

Immunogen:	Ag2835
GenBank accession number:	BC013645
Gene ID (NCBI):	11060
Full name:	WW domain containing E3 ubiquitin protein ligase 2

Product information

Purification method:	Antigen affinity purification
Storage:	PBS with 0.02% sodium azide and 50% glycerol pH 7.3. Store at -20°C.