

EIF5 Polyclonal Antibody

Catalog number: 11155-1-AP

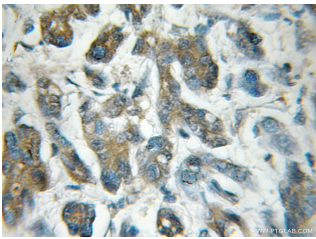
Size: 45 µg/150 µl

Source: Rabbit

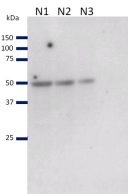
Isotype: IgG

Synonyms:

EIF5; eIF 5, EIF 5A, EIF5



Immunohistochemical of paraffin-embedded human pancreas cancer using 11155-1-AP (EIF5 antibody) at dilution of 1:50 (under 10x lens)



N=3 CHO Flp-In cell line (Invitrogen) whole cell lysate on a 10% gel probed with 1:500 anti-eIF5. 1 min exposure to film

WB result of EIF5 antibody (11155-1-AP, 1:500) with CHO cell lysate by Dr. Emma Hargreaves.

Background

Eukaryotic translation initiation factor 5, also named as EIF5, is a 431 amino acid protein, which contains one W2 domain and belongs to the eIF-2-beta/eIF-5 family. EIF5 catalyzes the hydrolysis of GTP bound to the 40S ribosomal initiation complex with the subsequent joining of a 60S ribosomal subunit resulting in the release of eIF-2 and the guanine nucleotide. EIF5 plays multiple roles in translation initiation.

Applications

Tested applications:	ELISA, IHC, WB
Species specificity:	Human, Mouse, Rat; other species not tested.
Calculated EIF5 MW:	49 kDa
Observed EIF5 MW:	50 kDa
Positive WB detected in:	CHO cells
Positive IHC detected in:	Human pancreas cancer tissue
Recommended dilution:	WB: N/A IHC: 1:20-1:200

Application key: WB = Western blotting, IHC = Immunohistochemistry, IF = Immunofluorescence, IP = Immunoprecipitation

Immunogen information

Immunogen:	Ag1629
GenBank accession number:	BC032866
Gene ID (NCBI):	1983
Full name:	Eukaryotic translation initiation factor 5

Product information

Purification method:	Antigen affinity purification
Storage:	PBS with 0.1% sodium azide and 50% glycerol pH 7.3. Store at -20°C.