

SLC22A18AS Polyclonal Antibody

Catalog number: 13475-1-AP

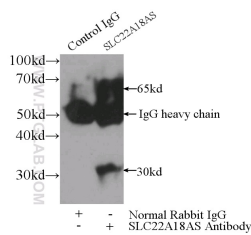
Size: 27 µg/150 µl

Source: Rabbit

Isotype: IgG

Synonyms:

SLC22A18AS; BWR1B,
BWSCR1B, ORCTL2S, p27
BWR1B, SLC22A18AS,
SLC22A1LS



IP Result of anti-SLC22A18AS
(IP:13475-1-AP, 3µg; Detection:13475-1-AP 1:300) with HepG2 cells lysate 3600µg.

Background

The SLC22A18/SLC22A18AS genes are a sense–antisense pair located at human chromosome segment 11p15.5. These genes are paternally imprinted: paternal alleles are silenced and maternal alleles are expressed. SLC22A18AS (antisense) is associated to SLC22A18 (sense). These two genes share, in divergent orientations, 31 bp in their 5' regions (between the first exon of SLC22A18AS and the second exon of SLC22A18). This antibody recognizes SLC22A18AS only.

Applications

Tested applications: ELISA, IP

Species specificity: Human; other species not tested.

Calculated SLC22A18AS MW: 253aa,27 kDa

Observed SLC22A18AS MW: 30 kDa;65 kDa

Positive IP detected in HepG2 cells

Recommended dilution: IP: 1:200-1:1000

Application key: WB = Western blotting, IHC = Immunohistochemistry, IF = Immunofluorescence, IP = Immunoprecipitation

Immunogen information

Immunogen: Ag4274

GenBank accession number: BC030237

Gene ID (NCBI): 5003

Full name: Solute carrier family 22 (organic cation transporter), member 18 antisense

Product information

Purification method: Antigen affinity purification

Storage: PBS with 0.1% sodium azide and 50% glycerol pH 7.3. Store at -20°C.