

SCLY Polyclonal Antibody

Catalog number: 10667-1-AP

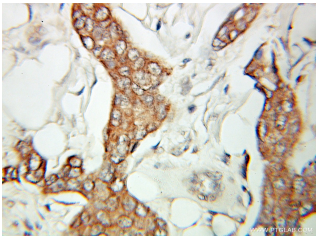
Size: 20 µg/150 µl

Source: Rabbit

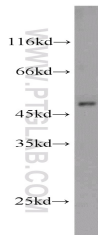
Isotype: IgG

Synonyms:

SCLY; hSCL, SCL, SCLY,
selenocysteine lyase



Immunohistochemical of paraffin-embedded human breast cancer using 10667-1-AP(SCLY antibody) at dilution of 1:100 (under 10x lens)



mouse liver tissue were subjected to SDS PAGE followed by western blot with 10667-1-AP(SCLY antibody) at dilution of 1:500

Background

Selenocysteine lyase(SCLY or SCL) catalyzes the decomposition of L-selenocysteine to L-alanine and elemental selenium. This protein expresses in all mouse tissues examined, with the highest expression in liver, kidney, and testis. Mouse SclY localized to the cytosolic fraction in mouse liver and formed homodimers(PMID:10692412).This antibody detects the N-terminal of the protein.

Applications

Tested applications:	ELISA, WB, IHC
Species specificity:	Human,Mouse,Rat; other species not tested.
Calculated SCLY MW:	49 kDa
Observed SCLY MW:	48kd
Positive WB detected in	Mouse liver tissue, mouse heart tissue
Positive IHC detected in	Human breast cancer tissue
Recommended dilution:	WB: 1:200-1:2000 IHC: 1:20-1:200

Application key: WB = Western blotting, IHC = Immunohistochemistry, IF = Immunofluorescence, IP = Immunoprecipitation

Immunogen information

Immunogen:	Ag0972
GenBank accession number:	BC007891
Gene ID (NCBI):	51540
Full name:	Selenocysteine lyase

Product information

Purification method:	Antigen affinity purification
Storage:	PBS with 0.1% sodium azide and 50% glycerol pH 7.3. Store at -20°C.