

C4BPA Polyclonal Antibody

Catalog number: 11819-1-AP

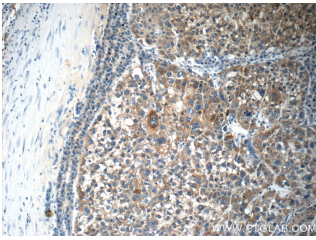
Size: 41 µg/150 µl

Source: Rabbit

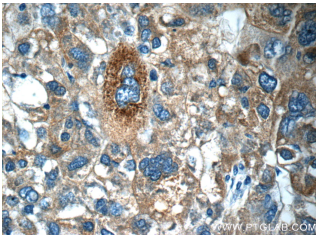
Isotype: IgG

Synonyms:

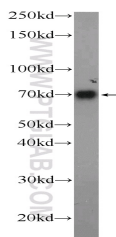
C4BPA; C4BP, C4BPA, Proline rich protein, PRP



Immunohistochemistry of paraffin-embedded human liver cancer tissue slide using 11819-1-AP(C4BPA Antibody) at dilution of 1:50 (under 10x lens)



Immunohistochemistry of paraffin-embedded human liver cancer tissue slide using 11819-1-AP(C4BPA Antibody) at dilution of 1:50 (under 40x lens)



human blood tissue were subjected to SDS PAGE followed by western blot with 11819-1-AP(C4BPA Antibody) at dilution of 1:600

Background

C4b-binding protein (C4BP) is a large oligomeric glycoprotein, present in plasma at a concentration of approximately 200 mg/L (PMID: 24218259). It is the main inhibitor of the classical complement and lectin pathway. C4BP is composed of two polypeptides (alpha and beta chains), which have molecular weights of 70 and 45 kDa, respectively (PMID: 7561113). This polyclonal antibody is raised against the C4BP alpha chain (C4BPA).

Applications

Tested applications:	ELISA, WB, IHC
Species specificity:	Human; other species not tested.
Calculated C4BPA MW:	597aa,67 kDa
Observed C4BPA MW:	70 kDa
Positive WB detected in	Human blood tissue, human plasma tissue
Positive IHC detected in	Human liver cancer tissue
Recommended dilution:	WB: 1:200-1:2000 IHC: 1:20-1:200

Application key: WB = Western blotting, IHC = Immunohistochemistry, IF = Immunofluorescence, IP = Immunoprecipitation

Immunogen information

Immunogen:	Ag2387
GenBank accession number:	BC022312
Gene ID (NCBI):	722
Full name:	Complement component 4 binding protein, alpha

Product information

Purification method:	Antigen affinity purification
Storage:	PBS with 0.02% sodium azide and 50% glycerol pH 7.3. Store at -20°C.