

EDF1 Polyclonal Antibody

Catalog number: 12419-1-AP

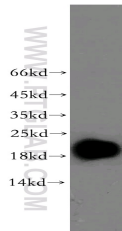
Size: 40 µg/150 µl

Source: Rabbit

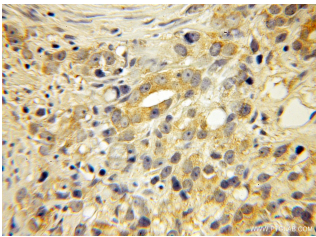
Isotype: IgG

Synonyms:

EDF1; EDF-1; MBF1; MGC9058



Jurkat cells were subjected to SDS PAGE followed by western blot with 12419-1-AP(EDF1 Antibody) at dilution of 1:1500



Immunohistochemistry of paraffin-embedded human prostate cancer using 12419-1-AP(EDF1 Antibody) at Dilution 1:50 (under 10x lens)

Applications

Tested applications:	ELISA, WB, IHC
Species specificity:	Human, mouse, rat; other species not tested.
Positive WB detected in:	Jurkat cells, mouse pancreas tissue
Calculated EDF1 MW:	148aa,16kd
Observed EDF1 MW:	18-20 kDa
Positive IHC detected in:	Human prostate cancer
Recommended dilution:	WB: 1:500-1:5000 IHC: 1:20-1:200

Application key: WB = Western blotting, IHC = Immunohistochemistry, IF = Immunofluorescence, IP = Immunoprecipitation, FC = Flow cytometry

Immunogen information

Immunogen:	Ag3063
GenBank accession number:	BC015500
Gene ID (NCBI):	8721
Full name:	Endothelial differentiation-related factor 1

Product information

Purification method:	Antigen affinity purification
Storage:	PBS with 0.02% sodium azide and 50% glycerol pH 7.3. Store at -20°C.