

## Beta sarcoglycan Polyclonal Antibody

Catalog number: 11936-1-AP

Size: 20 µg/150 µl

Source: Rabbit

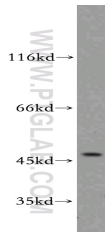
Isotype: IgG

Synonyms:

SGCB; 43DAG, A3b, Beta

sarcoglycan, Beta SG, LGMD2E,

SGC, SGCB



MCF7 cells were subjected to SDS PAGE followed by western blot with 11936-1-AP (SGCB antibody) at dilution of 1:300

### Background

SGCB is a 43-kD component of the dystrophin-glycoprotein complex.

### Applications

Tested applications: ELISA, WB

Species specificity: Human, Mouse, Rat; other species not tested.

Calculated Beta sarcoglycan MW: 318aa, 35kd

MW:

Observed Beta sarcoglycan MW: 45-48kd

MW:

Positive WB detected in MCF7 cells, human placenta tissue, mouse heart tissue, mouse pancreas tissue

Recommended dilution: WB: 1:200-1:2000

Application key: WB = Western blotting, IHC = Immunohistochemistry, IF = Immunofluorescence, IP = Immunoprecipitation

### Immunogen information

Immunogen: Ag2533

GenBank accession number: BC020709

Gene ID (NCBI): 6443

Full name: Sarcoglycan, beta (43kDa dystrophin-associated glycoprotein)

### Product information

Purification method: Antigen affinity purification

Storage: PBS with 0.02% sodium azide and 50% glycerol pH 7.3. Store at -20°C.