

Cirhin Polyclonal Antibody

Catalog number: 11057-1-AP

Size: 46 µg/150 µl

Source: Rabbit

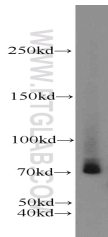
Isotype: IgG

Synonyms:

CIRH1A; CIRH1A, Cirhin,

FLJ14728, FLJ17146, KIAA1988,

NAIC, TEX292



SH-SY5Y cells were subjected to SDS PAGE followed by western blot with 11057-1-AP(CIRH1A antibody) at dilution of 1:1000

Background

Cirhin is a protein that in humans is encoded by the CIRH1A gene. Mutation of this gene has been associated with North American Indian childhood cirrhosis, a severe intrahepatic cholestasis that results in transient neonatal jaundice, and progresses to periportal fibrosis and cirrhosis in childhood and adolescence. (PMID: 12417987). Catalog#11057-1-AP is a rabbit polyclonal antibody raised against the full-length of human CIRHIN.

Applications

Tested applications:	ELISA, WB
Species specificity:	Human, Mouse, Rat; other species not tested.
Calculated Cirhin MW:	77 kDa
Observed Cirhin MW:	70-77 kDa
Positive WB detected in	SH-SY5Y cells, HepG2 cells, Neuro-2a cells
Recommended dilution:	WB: 1:500-1:5000

Application key: WB = Western blotting, IHC = Immunohistochemistry, IF = Immunofluorescence, IP = Immunoprecipitation

Immunogen information

Immunogen:	Ag1494
GenBank accession number:	BC009348
Gene ID (NCBI):	84916
Full name:	Cirrhosis, autosomal recessive 1A (cirhin)

Product information

Purification method:	Antigen affinity purification
Storage:	PBS with 0.1% sodium azide and 50% glycerol pH 7.3. Store at -20°C.