

RAP2A Polyclonal Antibody

Catalog number: 13789-1-AP

Size: 20 µg/150 µl

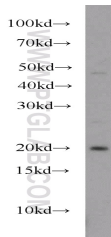
Source: Rabbit

Isotype: IgG

Synonyms:

RAP2A; K-REV; KREV; RAP2;

RbBP-30



K-562 cells were subjected to SDS PAGE followed by western blot with 13789-1-AP(RAP2A Antibody) at dilution of 1:1000

Applications

Tested applications:	ELISA, WB
Species specificity:	Human, mouse, rat; other species not tested.
Positive WB detected in:	K-562 cells, mouse brain tissue, PC-3 cells
Calculated RAP2A MW:	183aa,21kd
Observed RAP2A MW:	21kd
Recommended dilution:	WB: 1:500-1:5000

Application key: WB = Western blotting, IHC = Immunohistochemistry, IF = Immunofluorescence, IP = Immunoprecipitation, FC = Flow cytometry

Immunogen information

Immunogen:	Ag4808
GenBank accession number:	BC041333
Gene ID (NCBI):	5911
Full name:	RAP2A, member of RAS oncogene family

Product information

Purification method:	Antigen affinity purification
Storage:	PBS with 0.02% sodium azide and 50% glycerol pH 7.3. Store at -20°C.