

IP6K1 Polyclonal Antibody

Catalog number: 12057-2-AP

Size: 25 µg/150 µl

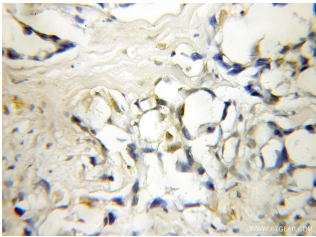
Source: Rabbit

Isotype: IgG

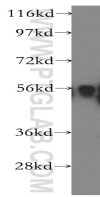
Synonyms:

IP6K1; IHPK1, InsP6 kinase 1,

IP6K1, KIAA0263, PiUS



Immunohistochemical of paraffin-embedded human lung cancer using 12057-2-AP (IP6K1 antibody) at dilution of 1:50 (under 10x lens)



human kidney tissue were subjected to SDS PAGE followed by western blot with 12057-2-AP (IP6K1 antibody) at dilution of 1:300

Applications

Tested applications:	ELISA, WB, IHC
Species specificity:	Human, Mouse, Rat; other species not tested.
Calculated IP6K1 MW:	441aa, 50 kDa
Observed IP6K1 MW:	54 kDa
Positive WB detected in	Human kidney tissue, human liver tissue
Positive IHC detected in	Human lung cancer tissue
Recommended dilution:	WB: 1:500-1:5000 IHC: 1:20-1:200

Application key: WB = Western blotting, IHC = Immunohistochemistry, IF = Immunofluorescence, IP = Immunoprecipitation

Immunogen information

Immunogen:	Ag2687
GenBank accession number:	BC012944
Gene ID (NCBI):	9807
Full name:	Inositol hexakisphosphate kinase 1

Product information

Purification method:	Antigen affinity purification
Storage:	PBS with 0.1% sodium azide and 50% glycerol pH 7.3. Store at -20°C.