

MPHOSPH6 Polyclonal Antibody

Catalog number: 10695-1-AP

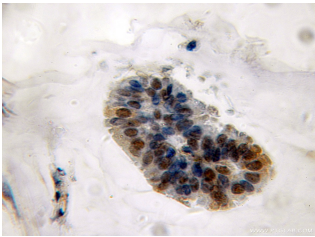
Size: 21 µg/150 µl

Source: Rabbit

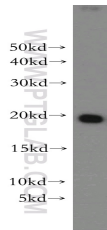
Isotype: IgG

Synonyms:

MPHOSPH6; MPHOSPH6,
MPP, MPP6, MPP 6, M phase
phosphoprotein 6



Immunohistochemical of paraffin-embedded human breast cancer using 10695-1-AP(MPHOSPH6 antibody) at dilution of 1:50 (under 10x lens)



MCF7 cells were subjected to SDS PAGE followed by western blot with 10695-1-AP(MPHOSPH6 antibody) at dilution of 1:300

Applications

Tested applications:	ELISA, WB, IHC
Species specificity:	Human, mouse, rat; other species not tested.
Calculated MPHOSPH6 MW:	19 kDa
Observed MPHOSPH6 MW:	19kd
Positive WB detected in	MCF7 cells, HeLa cells
Positive IHC detected in	Human breast cancer
Recommended dilution:	WB: 1:200-1:1000 IHC: 1:20-1:200

Application key: WB = Western blotting, IHC = Immunohistochemistry, IF = Immunofluorescence, IP = Immunoprecipitation

Immunogen information

Immunogen:	Ag1080
GenBank accession number:	BC005242
Gene ID (NCBI):	10200
Full name:	M-phase phosphoprotein 6

Product information

Purification method:	Antigen affinity purification
Storage:	PBS with 0.1% sodium azide and 50% glycerol pH 7.3. Store at -20°C.