

Renin Polyclonal Antibody

Catalog number: 14291-1-AP

Size: 25 µg/150 µl

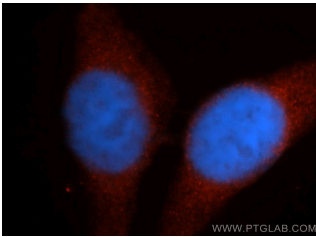
Source: Rabbit

Isotype: IgG

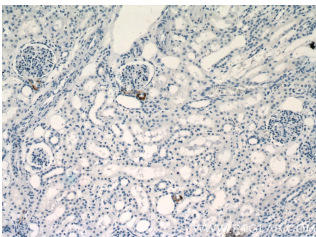
Synonyms:

REN; Angiotensinogenase,

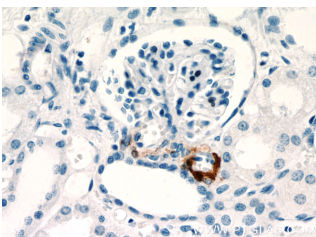
FLJ10761, REN, Renin



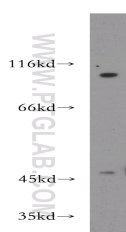
Immunofluorescent analysis of HepG2 cells, using REN antibody 14291-1-AP at 1:50 dilution and Rhodamine-labeled goat anti-rabbit IgG (red). Blue pseudocolor = DAPI (fluorescent DNA dye).



Immunohistochemistry of paraffin-embedded human kidney slide using 14291-1-AP (REN Antibody) at dilution of 1:200



Immunohistochemistry of paraffin-embedded human kidney slide using 14291-1-AP (REN Antibody) at dilution of 1:200



mouse heart tissue were subjected to SDS PAGE

Background

REN(Renin) is also named as angiotensinogenase and belongs to the peptidase A1 family. It is a highly specific endopeptidase, whose only known function is to generate angiotensin I from angiotensinogen in the plasma, initiating a cascade of reactions that produce an elevation of blood pressure and increased sodium retention by the kidney. Human prorenin and renin are synthesized in juxtaglomerular cells and it locates in the juxtaglomerular cells and afferent arteriole as cytoplasmic granules(PMID:19664745; PMID:9453303). This protein has a signal peptide of 23 amino acid and a propeptide of 43 amino acid. It has 2 isoforms produced by alternative splicing and two glycosylation sites. Defects in REN are a cause of renal tubular dysgenesis (RTD) and familial juvenile hyperuricemic nephropathy type 2 (HNFJ2).

Applications

Tested applications:	ELISA, WB, IF, IHC
Species specificity:	Human, Mouse, Rat; other species not tested.
Calculated Renin MW:	45 kDa
Observed Renin MW:	45-47 kDa
Positive WB detected in	Mouse heart tissue
Positive IHC detected in	Human kidney tissue, human gliomas tissue, mouse kidney tissue
Positive IF detected in	HepG2 cells
Recommended dilution:	WB: 1:200-1:1000 IHC: 1:20-1:200 IF: 1:20-1:200

Application key: WB = Western blotting, IHC = Immunohistochemistry, IF = Immunofluorescence, IP = Immunoprecipitation

Immunogen information

Immunogen:	Ag5612
GenBank accession number:	BC047752
Gene ID (NCBI):	5972
Full name:	Renin

Product information

Purification method:	Antigen affinity purification
Storage:	PBS with 0.02% sodium azide and 50% glycerol pH 7.3. Store at -20°C.

followed by western blot with
14291-1-AP(REN antibody) at
dilution of 1:300