

IL12RB1 Polyclonal Antibody

Catalog number: 13287-1-AP

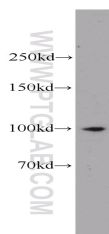
Size: 20 µg/150 µl

Source: Rabbit

Isotype: IgG

Synonyms:

IL12RB1; CD212, IL 12 receptor beta component, IL 12 receptor subunit beta 1, IL 12R beta 1, IL 12R BETA1, IL 12R subunit beta 1, IL 12RB1, IL12R, IL12RB, IL12RB1



K-562 cells were subjected to SDS PAGE followed by western blot with 13287-1-AP(IL12RB1 antibody) at dilution of 1:500

Background

IL12RB1, also named as Interleukin-12 receptor subunit beta-1 or CD212, is a 662 amino acid protein, which contains 5 fibronectin type-III domains and belongs to the type I cytokine receptor family. Type 2 subfamily. IL12RB1 localizes in the membrane and functions as an interleukin receptor which binds interleukin-12 with low affinity and is involved in IL12 transduction. Associated with IL12RB2 it forms a functional, high affinity receptor for IL12. Associates also with IL23R to form the interleukin-23 receptor which functions in IL23 signal transduction probably through activation of the Jak-Stat signaling cascade.

Applications

Tested applications:	ELISA, WB
Cited applications:	IF, IP, WB
Species specificity:	Human; other species not tested.
Cited species:	Human, monkey
Calculated IL12RB1 MW:	662aa,73 kDa
Observed IL12RB1 MW:	100kd
Positive WB detected in	K-562 cells
Recommended dilution:	WB: 1:200-1:2000

Application key: WB = Western blotting, IHC = Immunohistochemistry, IF = Immunofluorescence, IP = Immunoprecipitation

Immunogen information

Immunogen:	Ag3983
GenBank accession number:	BC029121
Gene ID (NCBI):	3594
Full name:	Interleukin 12 receptor, beta 1

Product information

Purification method:	Antigen affinity purification
Storage:	PBS with 0.02% sodium azide and 50% glycerol pH 7.3. Store at -20°C.