



MDF-DU702VXC-PA | 21A00B263

TwinGuard®

-86°C Ultra-Low Temperature Upright Freezer

25.7 cu.ft. | 729 L



The patented TwinGuard -86°C upright freezer is powered by a unique concept of two independent auto-cascade cooling circuits that work together, both independently and concurrently, to provide continuity in stored product protection over a range of real world conditions.

Ultimate Sample Protection

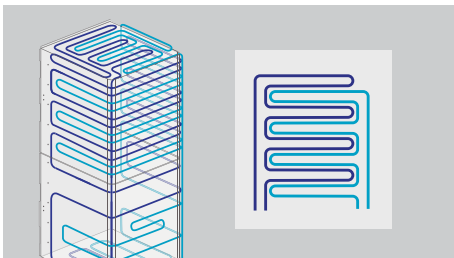
The dual cooling system offers the highest level of sample protection through the use of two independent refrigeration systems that maintain -86°C temperature. The two circuits work together for fast temperature recovery, while the secondary system keeps the temperature at -70°C if a service event occurs.

Efficient Sample Storage

The use of VIP® Plus cabinet and door insulation, combined with a newly designed refrigeration system layout ensures a capacity of 576 2" storage boxes, requiring only 9.78 sq.ft. (0.91 m2) of floor space.

Security Control and Monitoring

An eye level, door mounted color LCD touchscreen allows full user control while the USB port makes transferring logged data to a PC convenient. All performance attributes are displayed and an internal time/temperature log is expressed in graphic form.



Valuable Sample Storage

With two independent systems, each sustaining ultra-low temperatures, your samples remain safe. Optional CO₂ backup provides an extra layer of protection.



EZlatch

EZlatch is the centerpiece of a holistic inventory access and frost mitigation system. The simplified, one-handed, comfortable operation keeps TwinGuard upright freezers operating at maximum energy efficiency.



Ease of Use

The display panel includes a comprehensive alarm system with audible and visual warnings, unit diagnostics, running temperature log and predictive analytics.



The outer door gasket is easily removed and replaced without tools while the freezer remains in operation.

Model MDF-DU702VXC-PA | 21A00B263 shown with one additional shelf to create five levels. Additional configurations of four or five inner doors are available.

Model Number	MDF-DU702VXC-PA 21A00B263	
External Dimensions (W x D x H) ¹⁾	inches mm	40.6 x 36.8 x 78.5 1030 x 935 x 1993
Internal Dimensions (W x D x H)	inches mm	34.3 x 23.6 x 55.1 870 x 600 x 1400
Volume	cu.ft. liters	25.7 729
Net Weight	lbs kg	745 338
Capacity (2" boxes)	qty	576
Capacity (3" boxes)	qty	384
Inventory Racks (2" boxes)	qty	24
Inventory Racks (3" boxes)	qty	24

Performance		
Warranty ²⁾		5 years parts and labor
Cooling Performance ³⁾	°C	-86
Temperature Setting Range ³⁾	°C	-50 to -90 in 1° increments
Temperature Control Range ³⁾	°C	-50 to -86 in 1° increments
Cooling Performance ³⁾ Service Event (System A or B)	°C	-70

Control		
Controller		Microprocessor, touchscreen data entry, password protected
Display		LCD color touchscreen
Temperature Sensor		Pt-1000

Refrigeration		
Refrigeration System	qty	2 (auto-cascade)
Compressors	W	(2) 1100
Refrigerant		Mixed HC/HFC blended
Insulation Thickness, Material	inches mm	3.1 80, foamed-in-place + VIP Plus vacuum insulated panels

Construction		
Exterior Material		Painted steel
Interior Material		Painted steel
Outer Door	qty	1 (key lock with provision for optional pad lock)
Inner Doors	qty	2 (insulated ABS, stainless steel frames, positive latches)
Shelves	qty	3 (adjustable)
Shelf Dimensions (W x D)	inches mm	33.6 x 21.0 855 x 534
Max. Load per Shelf	lbs kg	110 50
Vacuum Release Port	qty	2: in door (automatic release) and side wall, lower left (manual release)
Access Ports	qty	3: upper back wall (back-up system), bottom left (recorder sensor), bottom right (access)
Access Port Diameter	inches mm	0.6 17
Casters	qty	4 (2 leveling feet on front base)

Alarms (V = Visual Alarm, B = Buzzer Alarm, R = Remote Alarm)		
Power Failure		V-B-R
Temperature (High and Low)		V-B-R
Sensor Failure		V-B-R
Door Open		V-B
Battery Check		V
Fan Motor Check		V-B
Cooling Circuit Abnormality		V
Remote Alarm Contacts		DC 30V 2A (normally open, normally closed, common)

Electrical and Noise Level		
Power Supply		208V-230V, 1Ø, 60Hz, NEMA 6-15P requires NEMA 6-15R receptacle
Voltage Booster		Standard, automatic, built-in
Noise Level ⁴⁾	dB(A)	52

Options		
Inner Door Kit with 5 Smaller Doors		MDF-7ID5-PW
Inner Door Kit with 4 Smaller Doors		MDF-7ID4-PW
Liquid CO ₂ Back-Up System		MDF-UB7-PW
Liquid Nitrogen Back-Up System		MDF-UB7-PW-LN2

Temperature Recorder		
Circular Type	6", 7 day circular	MTRC954
Chart Paper	52 charts per box	C7100386REV
Ink Pen	pack of 6	R252

Optional Communication System		
Wireless, Cloud-Based, Automatic Data Management		LabAlert® Monitoring System

¹⁾ Exterior dimensions of cabinet excluding handle, rear stand-off brackets and other external projections. Consult product web page for doorway entry instructions, less than 36.8"

²⁾ Current warranty offered at time of printing and may be subject to change; US and Canada only

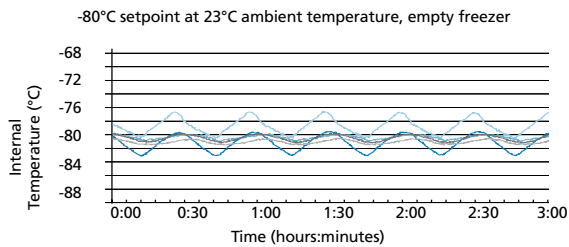
³⁾ Air temperature measured at freezer center, ambient temperature +30°C, no load

⁴⁾ Nominal value, background noise 20 dB(A)

Improved Temperature Performance

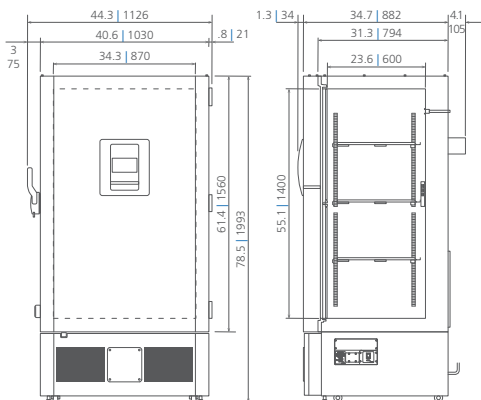
The TwinGuard -86°C upright freezer design provides optimal temperature stability and uniformity. During routine door openings, the insulated inner doors minimize the loss of cold air even when the outer door is open.

Temperature Uniformity Data:



Dimensions

Unit : inch | mm



Specifications are subject to change without notice.

Performance data herein is based on independent testing at time of publication.

