

β-ENaC Polyclonal Antibody

Catalog number: 14134-1-AP

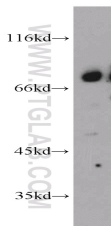
Size: 22 µg/150 µl

Source: Rabbit

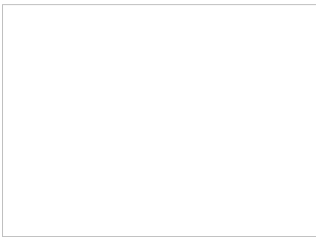
Isotype: IgG

Synonyms:

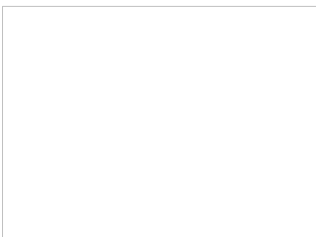
SCNN1B; Beta ENaC, Beta NaCH, ENaCb, ENaCbeta, SCNEB, SCNN1B, β ENaC, βENaC



PC-3 cells were subjected to SDS PAGE followed by western blot with 14134-1-AP (β-ENaC antibody) at dilution of 1:500



Immunohistochemistry of paraffin-embedded human kidney tissue slide using 14134-1-AP (β-ENaC Antibody) at dilution of 1:200 (under 10x lens).



Immunohistochemistry of paraffin-embedded human kidney tissue slide using 14134-1-AP (β-ENaC Antibody) at dilution of 1:200 (under 40x lens).

Background

SCNN1B, also named as SCNEB, ENaCB, Beta-NaCH and Beta-ENaC, belongs to the amiloride-sensitive sodium channel (TC 1.A.6) family and SCNN1B subfamily. Sodium permeable non-voltage-sensitive ion channel is inhibited by the diuretic amiloride. SCNN1B mediates the electrodiffusion of the luminal sodium (and water, which follows osmotically) through the apical membrane of epithelial cells. It controls the reabsorption of sodium in kidney, colon, lung and sweat glands. SCNN1B plays a role in taste perception.

Applications

Tested applications:	ELISA, WB, IHC
Cited applications:	WB
Species specificity:	Human, Mouse, Rat; other species not tested.
Cited species:	Hamster
Calculated β-ENaC MW:	640aa, 73 kDa
Observed β-ENaC MW:	75-80 kDa
Positive WB detected in	PC-3 cells, mouse kidney tissue
Positive IHC detected in	Human kidney tissue
Recommended dilution:	WB: 1:200-1:2000 IHC: 1:20-1:200

Application key: WB = Western blotting, IHC = Immunohistochemistry, IF = Immunofluorescence, IP = Immunoprecipitation

Immunogen information

Immunogen:	Ag5348
GenBank accession number:	BC036352
Gene ID (NCBI):	6338
Full name:	Sodium channel, nonvoltage-gated 1, beta

Product information

Purification method:	Antigen affinity purification
Storage:	PBS with 0.02% sodium azide and 50% glycerol pH 7.3. Store at -20°C.