

## MAPRE2 Polyclonal Antibody

Catalog number: 10364-1-AP

Size: 37 µg/150 µl

Source: Rabbit

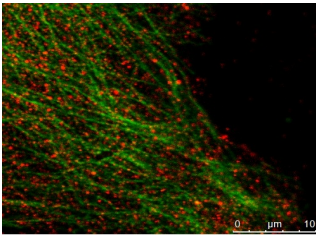
Isotype: IgG

Synonyms:

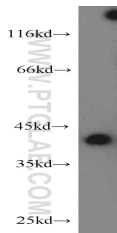
MAPRE2; APC binding protein

EB2, EB1, EB2, End binding

protein 2, MAPRE2, RP1



Mouse keratinocyte showing MAPRE2 (#10364-1-AP, 1:100 dilution, with Alexa 594 labelled 2nd Ab) in red and alpha-tubulin (#66031-1-Ig, 1:100 dilution, with Alexa 488 labelled 2nd Ab) in green.



K-562 cells were subjected to SDS PAGE followed by western blot with 10364-1-AP (MAPRE2 antibody) at dilution of 1:500

### Background

RP1 protein shares significant homology to the adenomatous polyposis coli (APC) protein-binding EB1 gene family and binds specifically to the C-terminal region of the APC protein. RP1 also binds directly to tubulin, both in vitro and in vivo. The function of RP1 is currently unknown; however, its homology suggests involvement in tumorigenesis of colorectal cancers and proliferative control of normal cells. It may belong to the intermediate/early gene family, involved in the signal transduction cascade downstream of the TCR.

### Applications

Tested applications:	ELISA, WB, IF
Species specificity:	Human, Mouse, Rat; other species not tested.
Calculated MAPRE2 MW:	37 kDa
Observed MAPRE2 MW:	39-42 kDa
Positive WB detected in	K-562 cells, Jurkat cells
Positive IF detected in	Mouse cells
Recommended dilution:	WB: 1:200-1:2000 IF: 1:50-1:500

Application key: WB = Western blotting, IHC = Immunohistochemistry, IF = Immunofluorescence, IP = Immunoprecipitation

### Immunogen information

Immunogen:	Ag0416
GenBank accession number:	BC007318
Gene ID (NCBI):	10982
Full name:	Microtubule-associated protein, RP/EB family, member 2

### Product information

Purification method:	Antigen affinity purification
Storage:	PBS with 0.1% sodium azide and 50% glycerol pH 7.3. Store at -20°C.