

CHFR Polyclonal Antibody

Catalog number: 12169-1-AP

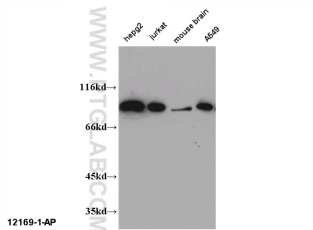
Size: 40 µg/150 µl

Source: Rabbit

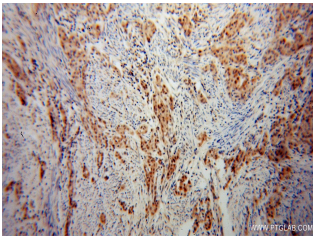
Isotype: IgG

Synonyms:

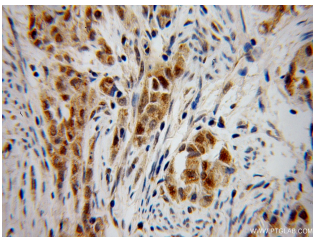
CHFR; CHFR, FLJ10796,
FLJ33629, RING finger protein
196, RNF116, RNF196



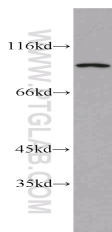
WB result of 12169-1-AP(CHFR antibody).



Immunohistochemical of paraffin-embedded human endometrial cancer using 12169-1-AP(CHFR antibody) at dilution of 1:100 (under 10x lens)



Immunohistochemical of paraffin-embedded human endometrial cancer using 12169-1-AP(CHFR antibody) at dilution of 1:100 (under 40x lens)



HepG2 cells were subjected to SDS PAGE followed by

Background

The Checkpoint with forkhead and RING finger domains protein(CHFR) is a checkpoint protein that reportedly initiates a cell cycle delay in response to microtubule stress during prophase in mitosis and it has been hypothesized to be a tumor suppressor with a potential role as a biomarker for chemotherapeutic response to Taxol(PMID:17596595). It belongs to the CHFR family. Endogenous Chfr is ubiquitinated and phosphorylated in an MPF-dependent manner in mitotic *Xenopus* egg extracts(PMID:18504434). It has 5 isoforms produced by alternative splicing.

Applications

Tested applications:	ELISA, WB, IHC
Cited applications:	IHC
Species specificity:	Human, Mouse, Rat; other species not tested.
Cited species:	Human
Calculated CHFR MW:	664aa, 73 kDa
Observed CHFR MW:	70-85 kDa
Positive WB detected in	HepG2 cells, A549 cells, Jurkat cells, mouse brain tissue, SMMC-7721 cells
Positive IHC detected in	Human endometrial cancer tissue, human lung cancer tissue
Recommended dilution:	WB: 1:500-1:5000 IHC: 1:20-1:200

Application key: WB = Western blotting, IHC = Immunohistochemistry, IF = Immunofluorescence, IP = Immunoprecipitation

Immunogen information

Immunogen:	Ag2811
GenBank accession number:	BC012072
Gene ID (NCBI):	55743
Full name:	Checkpoint with forkhead and ring finger domains

Product information

Purification method:	Antigen affinity purification
Storage:	PBS with 0.02% sodium azide and 50% glycerol pH 7.3. Store at -20°C.

western blot with 12169-1-
AP(CHFR antibody) at
dilution of 1:1000