

## BCL2L14 Polyclonal Antibody

Catalog number: 12846-1-AP

Size: 24 µg/150 µl

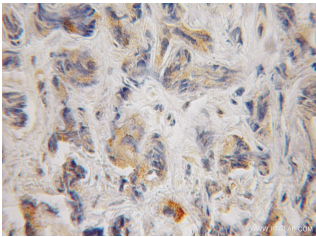
Source: Rabbit

Isotype: IgG

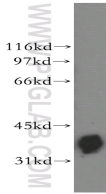
Synonyms:

BCL2L14; Apoptosis regulator

Bcl G, BCL2L14



Immunohistochemical of paraffin-embedded human prostate cancer using 12846-1-AP (BCL2L14 antibody) at dilution of 1:100 (under 10x lens)



human lung tissue were subjected to SDS PAGE followed by western blot with 12846-1-AP (BCL2L14 antibody) at dilution of 1:500

### Applications

Tested applications:	ELISA, WB, IHC
Species specificity:	Human; other species not tested.
Calculated BCL2L14 MW:	327aa, 37kd
Observed BCL2L14 MW:	37 kDa
Positive WB detected in:	Human lung tissue
Positive IHC detected in:	Human prostate cancer tissue
Recommended dilution:	WB: 1:500-1:5000 IHC: 1:20-1:200

Application key: WB = Western blotting, IHC = Immunohistochemistry, IF = Immunofluorescence, IP = Immunoprecipitation

### Immunogen information

Immunogen:	Ag3926
GenBank accession number:	BC025778
Gene ID (NCBI):	79370
Full name:	BCL2-like 14 (apoptosis facilitator)

### Product information

Purification method:	Antigen affinity purification
Storage:	PBS with 0.1% sodium azide and 50% glycerol pH 7.3. Store at -20°C.