

EPCR Polyclonal Antibody

Catalog number: 11391-1-AP

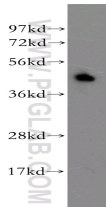
Size: 40 µg/150 µl

Source: Rabbit

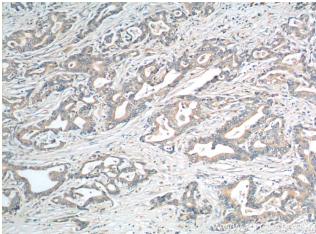
Isotype: IgG

Synonyms:

PROCR; Activated protein C receptor, APC receptor, bA42O4.2, CCCA, CCD41, CD201, Endothelial protein C receptor, EPCR, PROCR



human spleen tissue were subjected to SDS PAGE followed by western blot with 11391-1-AP(PROCR antibody) at dilution of 1:400



Immunohistochemistry of paraffin-embedded human pancreas cancer tissue slide using 11391-1-AP(PROCR Antibody) at dilution of 1:100 (under 10x lens).

Applications

| | |
|--------------------------|--|
| Tested applications: | ELISA, WB, IHC |
| Species specificity: | Human; other species not tested. |
| Calculated EPCR MW: | 238aa,27 kDa |
| Observed EPCR MW: | 49 kDa |
| Positive WB detected in | Human spleen tissue |
| Positive IHC detected in | Human pancreas cancer tissue, human lung cancer tissue |
| Recommended dilution: | WB: 1:200-1:2000 IHC: 1:50-1:500 |

Application key: WB = Western blotting, IHC = Immunohistochemistry, IF = Immunofluorescence, IP = Immunoprecipitation

Immunogen information

| | |
|---------------------------|--|
| Immunogen: | Ag1937 |
| GenBank accession number: | BC014451 |
| Gene ID (NCBI): | 10544 |
| Full name: | Protein C receptor, endothelial (EPCR) |

Product information

| | |
|----------------------|---|
| Purification method: | Antigen affinity purification |
| Storage: | PBS with 0.1% sodium azide and 50% glycerol pH 7.3. Store at -20°C. |