

SSB Polyclonal Antibody

Catalog number: 11720-1-AP

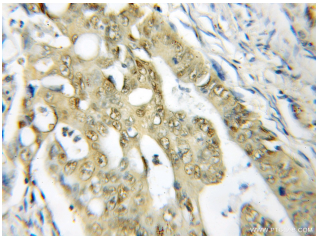
Size: 37 µg/150 µl

Source: Rabbit

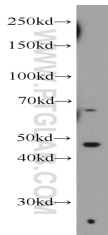
Isotype: IgG

Synonyms:

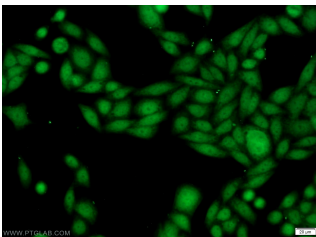
SSB; La, La autoantigen, La ribonucleoprotein, LARP3, Lupus La protein, SS B, SSB



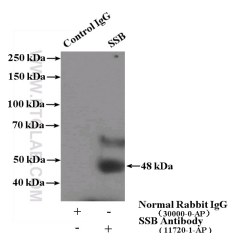
Immunohistochemical of paraffin-embedded human colon cancer using 11720-1-AP(SSB antibody) at dilution of 1:50 (under 10x lens)



Jurkat cells were subjected to SDS PAGE followed by western blot with 11720-1-AP(SSB Antibody) at dilution of 1:300



Immunofluorescent analysis of HeLa cells using 11720-1-AP(SSB Antibody) at dilution of 1:50 and Alexa Fluor 488-conjugated AffiniPure Goat Anti-Rabbit IgG(H+L)



IP Result of anti-SSB
(IP:11720-1-AP, 4ug;

Applications

Tested applications:	ELISA, IHC, WB, IF, IP
Cited applications:	WB
Species specificity:	Human, Mouse, Rat; other species not tested.
Cited species:	Human
Calculated SSB MW:	408aa, 47 kDa
Observed SSB MW:	48 kDa
Positive WB detected in	Jurkat cells, HEK-293 cells, HeLa cells
Positive IP detected in	Jurkat cells
Positive IHC detected in	Human colon cancer tissue
Positive IF detected in	HeLa cells
Recommended dilution:	WB: 1:200-1:1000 IP: 1:200-1:1000 IHC: 1:20-1:200 IF: 1:20-1:200

Application key: WB = Western blotting, IHC = Immunohistochemistry, IF = Immunofluorescence, IP = Immunoprecipitation

Immunogen information

Immunogen:	Ag2294
GenBank accession number:	BC001289
Gene ID (NCBI):	6741
Full name:	Sjogren syndrome antigen B (autoantigen La)

Product information

Purification method:	Antigen affinity purification
Storage:	PBS with 0.1% sodium azide and 50% glycerol pH 7.3. Store at -20°C.

Detection:11720-1-AP 1:300)
with Jurkat cells lysate
3600ug.