

## SMARCD1 Polyclonal Antibody

Catalog number: 10998-2-AP

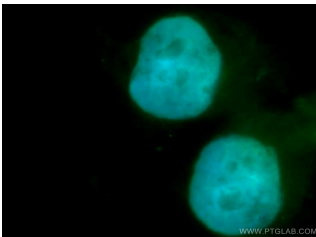
Size: 65 µg/150 µl

Source: Rabbit

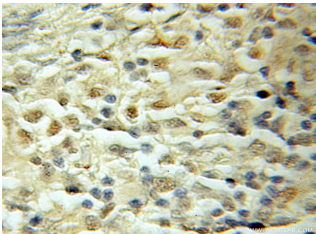
Isotype: IgG

Synonyms:

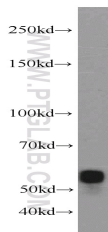
SMARCD1; BAF60A, BRG1 associated factor 60A, CRACD1, Rsc6p, SMARCD1, SWI/SNF complex 60 kDa subunit



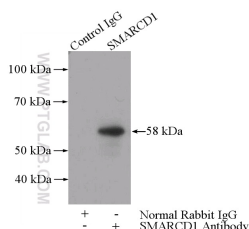
Immunofluorescent analysis of SH-SY5Y cells, using SMARCD1 antibody 10998-2-AP at 1:50 dilution and FITC-labeled donkey anti-rabbit IgG (green). Blue pseudocolor = DAPI (fluorescent DNA dye).



Immunohistochemical of paraffin-embedded human lymphoma using 10998-2-AP (SMARCD1 antibody) at dilution of 1:50 (under 10x lens)



mouse brain tissue were subjected to SDS PAGE followed by western blot with 10998-2-AP (SMARCD1 antibody) at dilution of 1:600



### Background

SMARCD1 belongs to the nuclear SWI/SNF chromatin remodeling complex, which regulates transcription and interacts with nucleolin in the nucleus. In addition, it's a member of the neural progenitors-specific chromatin remodeling complex (npBAF complex) and the neuron-specific chromatin remodeling complex (nBAF complex). It possesses a SWIB domain which is homologous to and shares a common fold with the p53-binding domain of MDM2, a cell cycle regulator which interacts with NPM1. SMARCD1 has a strong influence on the Vitamin D-mediated transcriptional activity from an enhancer Vitamin D receptor element (VDRE). And it can mediate critical interactions between nuclear receptors and the BRG1/SMARCA4 chromatin-remodeling complex for transactivation.

### Applications

Tested applications:	ELISA, WB, IHC, IF, IP
Cited applications:	WB
Species specificity:	Human, Mouse, Rat; other species not tested.
Cited species:	Human
Calculated SMARCD1 MW:	58 kDa
Observed SMARCD1 MW:	58 kDa
Positive WB detected in	Mouse brain tissue, human brain tissue, Jurkat cells
Positive IP detected in	Mouse brain tissue
Positive IHC detected in	Human lymphoma tissue
Positive IF detected in	SH-SY5Y cells
Recommended dilution:	WB: 1:200-1:2000 IP: 1:200-1:2000 IHC: 1:20-1:200 IF: 1:20-1:200

Application key: WB = Western blotting, IHC = Immunohistochemistry, IF = Immunofluorescence, IP = Immunoprecipitation

### Immunogen information

Immunogen:	Ag1453
GenBank accession number:	BC009368
Gene ID (NCBI):	6602
Full name:	SWI/SNF related, matrix associated, actin dependent regulator of chromatin, subfamily d, member 1

### Product information

Purification method:	Antigen affinity purification
Storage:	PBS with 0.1% sodium azide and 50% glycerol pH 7.3. Store at -20°C.

**IP Result of anti-SMARCD1  
(IP:10998-2-AP, 3ug;  
Detection:10998-2-AP 1:600)  
with mouse brain tissue lysate  
4000ug.**