

CCT5 Polyclonal Antibody

Catalog number: 11603-1-AP

Size: 29 µg/150 µl

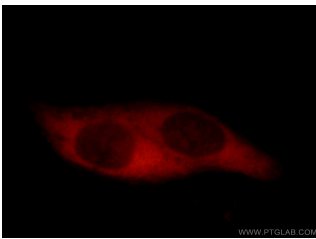
Source: Rabbit

Isotype: IgG

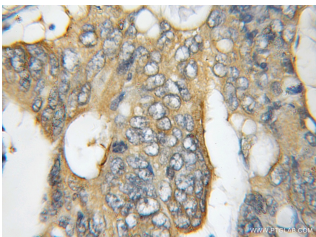
Synonyms:

CCT5; CCT epsilon, CCT5, CCTE,

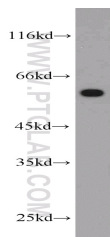
KIAA0098, TCP 1 epsilon



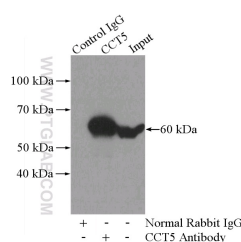
Immunofluorescent analysis of HepG2 cells, using CCT5 antibody 11603-1-AP at 1:50 dilution and Rhodamine-labeled goat anti-rabbit IgG (red).



Immunohistochemical of paraffin-embedded human colon cancer using 11603-1-AP(CCT5 antibody) at dilution of 1:100 (under 10x lens)



HeLa cells were subjected to SDS PAGE followed by western blot with 11603-1-AP(CCT5 antibody) at dilution of 1:1000



IP Result of anti-CCT5

(IP:11603-1-AP, 4ug;

Detection:11603-1-AP 1:1000)

Applications

| | |
|--------------------------|---|
| Tested applications: | ELISA, IHC, IF, IP, WB |
| Cited applications: | IF, WB |
| Species specificity: | Human, Mouse, Rat, Zebrafish; other species not tested. |
| Cited species: | Human, mouse |
| Calculated CCT5 MW: | 541aa, 60 kDa |
| Observed CCT5 MW: | 60kd |
| Positive WB detected in | HeLa cells, COLO 320 cells |
| Positive IP detected in | HeLa cells |
| Positive IHC detected in | Human colon cancer tissue |
| Positive IF detected in | HepG2 cells |
| Recommended dilution: | WB: 1:500-1:5000 |
| | IP: 1:500-1:5000 |
| | IHC: 1:20-1:200 |
| | IF: 1:20-1:200 |

Application key: WB = Western blotting, IHC = Immunohistochemistry, IF = Immunofluorescence, IP = Immunoprecipitation

Immunogen information

| | |
|---------------------------|---|
| Immunogen: | Ag2146 |
| GenBank accession number: | BC035499 |
| Gene ID (NCBI): | 22948 |
| Full name: | Chaperonin containing TCP1, subunit 5 (epsilon) |

Product information

| | |
|----------------------|---|
| Purification method: | Antigen affinity purification |
| Storage: | PBS with 0.1% sodium azide and 50% glycerol pH 7.3. Store at -20°C. |

with HeLa cells lysate 1200ug.